

PageWide XL8000

Technote

RIP SOFTWARE - VERSION 12 - CALDERA 2018



Table of Contents

Table of Contents	2
Driver History	3
Printer settings	4
Print module interface	4
Resolution	4
Modes	4
Qualities	4
Actions	4
EasySelect	5
Settings windows	6
Printer	7
Media	9
Status	9
Printer properties	10
Multipage & RIP Actions	10
Multipage Collate	11

License Agreement

Copyright 2018 Caldera. All rights reserved.

All trademarks, logos and brand names mentioned in this publication are property of their respective owners.

All images and photographs here featured are the copyright of their respective owners.

Caldera reserves the right to modify software specifications and content cited in this document without prior notice.

High Quality Document

You can find a High Quality Version of this document on **CalderaDesk**:

[Download Here](#)

Driver History

Supported since **Version 10.1**

Version 12 History

Release	Date	Comments
A (V12.0)	12/2018	Fix bug #9163: printer status query network communication.

Version 11 History

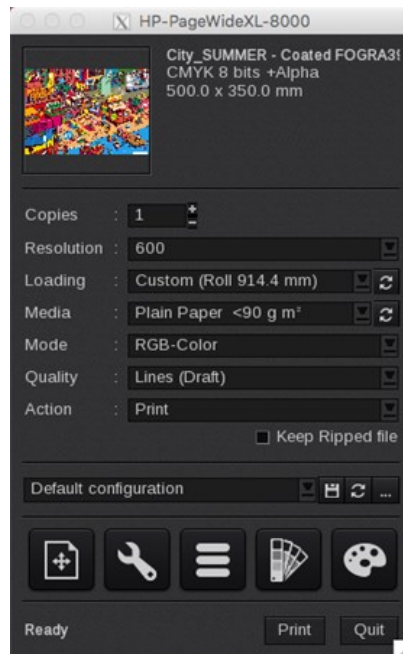
Release	Date	Comments
A (V11.1)	11/2017	Now supports the multipage-multicopy job structure of the printer (not compatible with reprint jobs) and the Multipage Collate option.
V11.1	06/2017	Fix Bug #5398: Increase wake up timeout of the driver : fix error "unable to query printer status" when the printer is sleeping. + Fix bad formed jobs when using rip then print for job sizes of more than 3.8GB.

Version 10 History

Release	Date	Comments
C (V10.2)	06/2016	Better compatibility for GrandPlan, Display warnings for not recommended resolutions, Do not show unsupported qualities after firmware upgrades.
B (V10.2)	02/2016	Update Unilib to MR1 version, Fix a crash caused by querying the inks status, Change roll switch policy option "Paper type protection" to "Save paper" (Selects the media source with the smaller media that fits).

Printer settings

Print module interface



Resolution

The HP PageWide XL printer support the following graphic **Resolutions**: 200dpi, 300dpi, 600dpi and 1200dpi.

HP recommend to use the 600dpi graphic resolution.

The 1200 dpi printing resolution is selected by default

Modes

The HP PageWide XL printer supports only *RGB*. There are two RGB rendering **Modes** for the printer:

- *RGB-Color*: Print the job in color.
- *RGB-BlackAndWhite*: Print the job in black and white only.

Qualities

The HP PageWide XL printer has three different qualities :

- *Lines (Draft)*: Low density (CAD drawings).
- *Uniform Area (Normal)*: Low density and large area fills (GIS).
- *High Details (Best)*: Good color transitions and details (Posters).

Qualities depend on the selected **Resolution**, **Media** and **Mode**. Some combination may not have compatible qualities. Compatible qualities may change for each firmware and printer model.

Actions

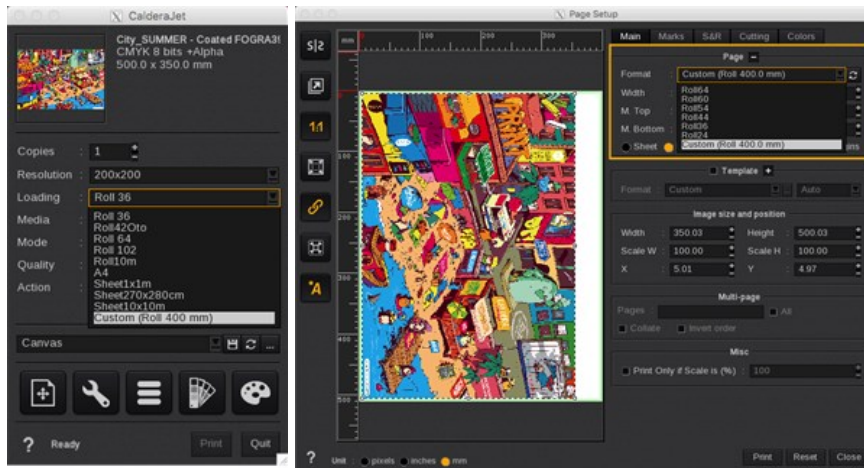
Be careful, the *RIP* and *RIP then Print* **Actions** are not compatible with the **Multipage mode**, which is activated by default. Please refer to the Multipage section to get further information.

EasySelect

EasySelect is the capability for **Caldera RIP** to use the size and type of loaded media in the printer. This printer supports 3 levels of selection:

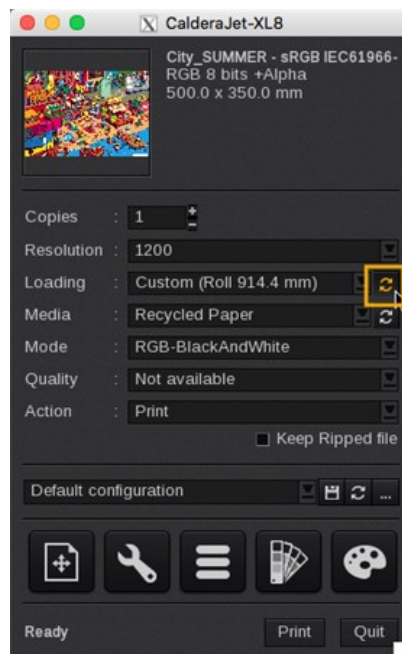
- **CustomLoading:** uses a **custom size** (sheet or roll) defined at last moment in the **Print** module interface.

[More information about CustomLoading on CalderaDesk](#)



- **AutoLoading:** uses the size of the media currently loaded in the printer.

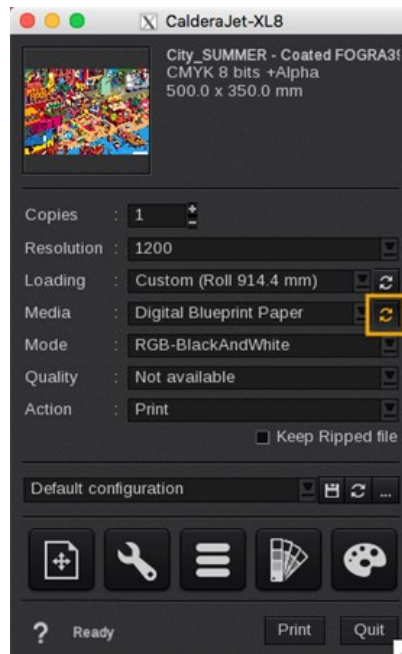
[More information about AutoLoading on CalderaDesk](#)



PRINTER SETTINGS

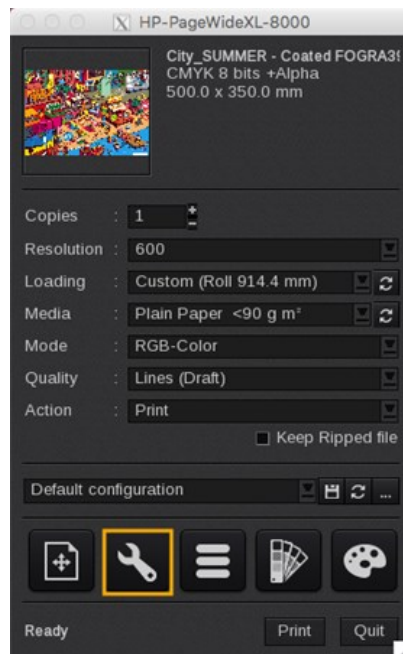
- **AutoMedia**: uses the **type** of the media currently loaded in the printer.

[More information about AutoMedia on CalderaDesk](#)

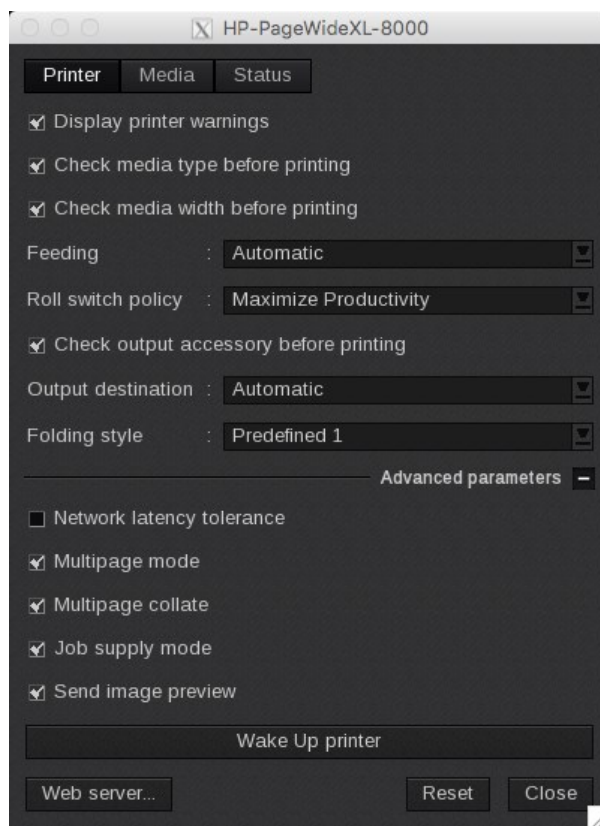


Settings windows

These settings can be found by clicking on the **Settings** button from the **Print** module main window.



Printer



- **Display printer warnings:** Warn the user about printer warning. Warnings are automatically displayed when printing a job, there are also available in the printer Status tab.
- **Check media type before printing:** Warn the user that the loaded media does not correspond to the selected media in the **Print** module.
- **Check media width before printing:** Warn the user when the current job is larger than the loaded rolls on the printer.
- **Feeding:** Force to print with the selected media source. When *automatic* is selected, the printer chooses automatically the roll based on the selected media type and roll policy. You can choose **automatic** or different **rolls from 1 to 6**.
- **Roll switch policy:** When there is more than one roll with the same media type loaded and automatic feeding is selected, then the printer will choose a media source based on the policies below:
 - *Maximize Productivity:* Selects the media source currently ready to print.
 - *Deplete rolls:* Selects the media source with less paper remaining.
 - *Save Paper:* Selects the media source with the smallest media that fits.
- **Check output accessory before printing:** Warn the user when the output accessory is ready before printing.
- **Output destination:** This option allows the user to override the default output accessory to
 - *Automatic,*
 - *Bin,*
 - *Stacker,*
 - *Folder,*
 - *External Stacker.*

When *Automatic* is selected the output accessory is chosen by the printer itself.
See the related HP PageWide XL documentation.

Note: *Folders* do not support roll widths superior to 36 inches.

- **Folding Style :** Select a slot of predefined folding styles. On the HP PageWide XL main panel you can store specific folding styles in four predefined slots. These slots (1,2,3 or 4) can be selected in this option . See the related HP PageWide XL documentation for the folding styles available

Advanced Parameters

- **Network latency tolerance:** This option allows the driver to print in network fail-safe mode. The job will always be sent to the printer whenever it is ready, on error or on hold.
- **Multipage mode:** allows you to use the multipage-multicopy job structure of the printer when printing multipage documents. Be careful, it is not compatible with reprint jobs.
- **Multipage collate:** groups pages of multipage documents by individual copies (1-2-3...1-2-3...). When you print multipage documents without it, the same pages are grouped together (1-1-1...2-2-2...). This option is available only when **Multipage mode** is activated.
- **Job supply mode:** This mode allows the driver to send continuously jobs to the printer without waiting for completion. It increases the printer throughput by feeding continuously the printing queue but ignores job errors.
- **Send image preview:** If this option is deactivated, the driver will not send the image preview to the printer.

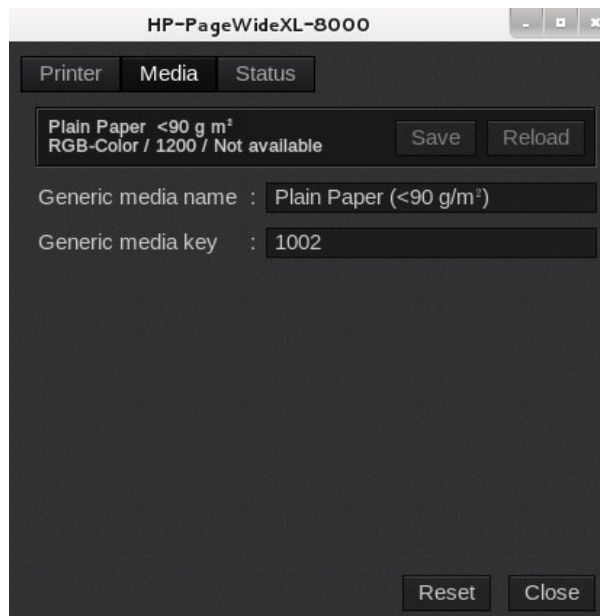
Other

- **Reset:** This **Reset** button allows you to come back to the original (default) options. Advanced ones are also concerned by this action.
- **Wake up Printer:** With this button you can wake up the printer from the sleep mode.
- **Web server:** The **Web server** button, that is only available from the tab **Printer** opens the printer's web server page (using your web browser). Here you can find the details you get on the **Caldera RIP** software and more information about the printer.



For more information about the printer web server page, please refer to your **HP PageWide XL** documentation

Media



The PageWide unit is not able to store media profiles.

In **EasyMedia*** you can create, edit and remove projects with the media available on the printer. The associated profiles are local to **Caldera RIP**.

*EasyMedia is named ProfileExpert in the TextilePro interface.

Status



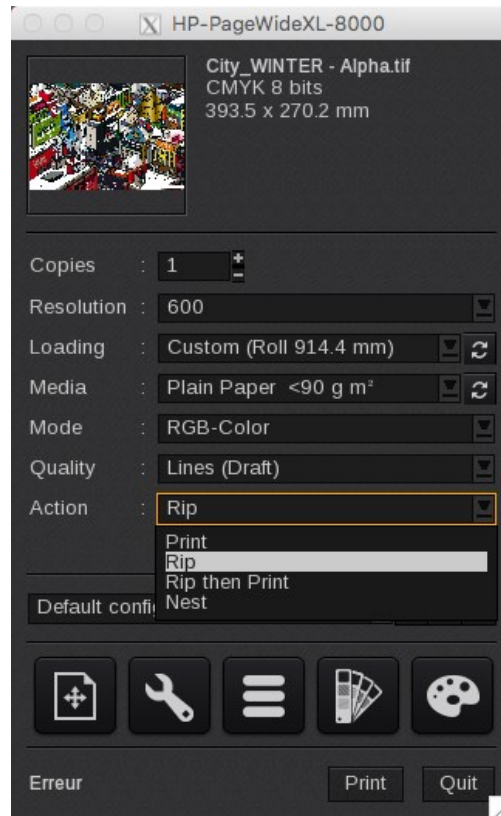
- **Status:** Global state of the printer: *Ready, Running, Not available*. All data are coming from the printer, if it is *not available*, nothing can be displayed.
- **Inks:** *Inks* levels
- **Media:** Info about the media loaded on the printer
- **Misc:** complementary info about the printer (*model, firmware version, serial number, additional roll information and printer warnings*).
- **Refresh:** button to refresh the tab.

Note that the printer warnings and errors are also displayed at the bottom of the window.

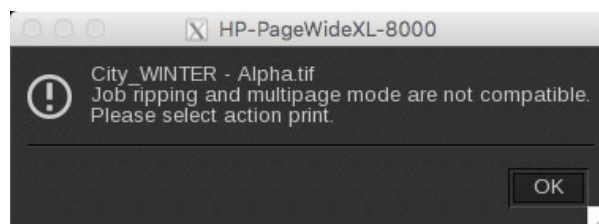
Printer properties

Multipage & RIP Actions

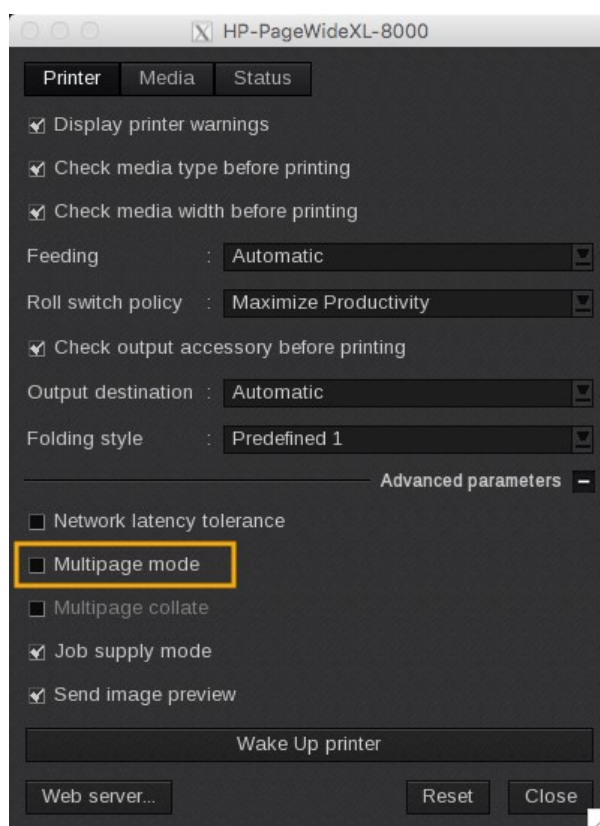
By default, the **Multipage mode** is active which is not compatible with the RIP Actions : *RIP* and *RIP then Print*.



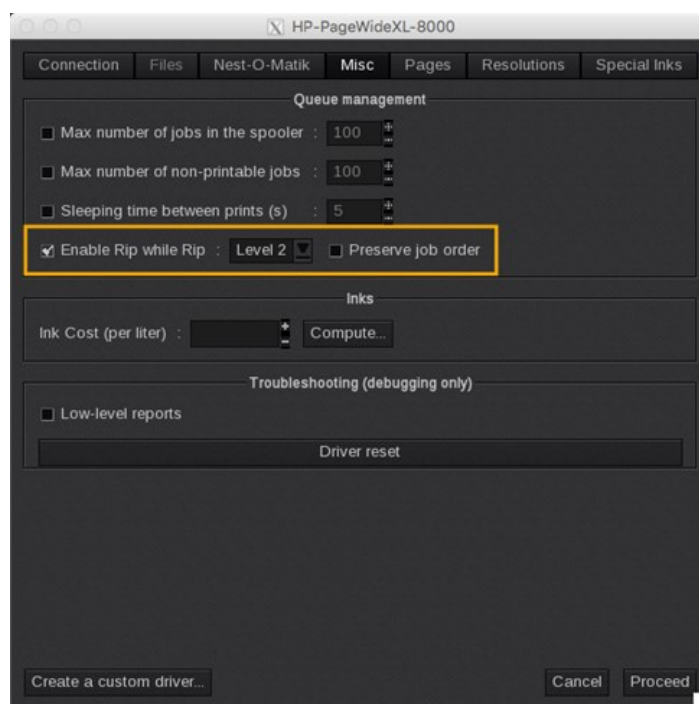
If you try to use one of these actions, you will get the following message.



If you want to perform a ripping action anyway, please deactivate the **Multipage mode** first. Open the *Printer Settings* window and stay on the Printer tab (open by default). Display the advanced parameter by clicking on the + (plus) button. There, deactivate the **Multipage mode** by unchecking the box and click Close. It closes the window and saves the parameters.



Please also note that the **Rip while Rip** option, even if it is enabled in the printer configuration (**ServerAdmin** module), will not work with the **Multipage mode** enabled as well as files cannot be ripped and kept in the **Spooler** with this option.

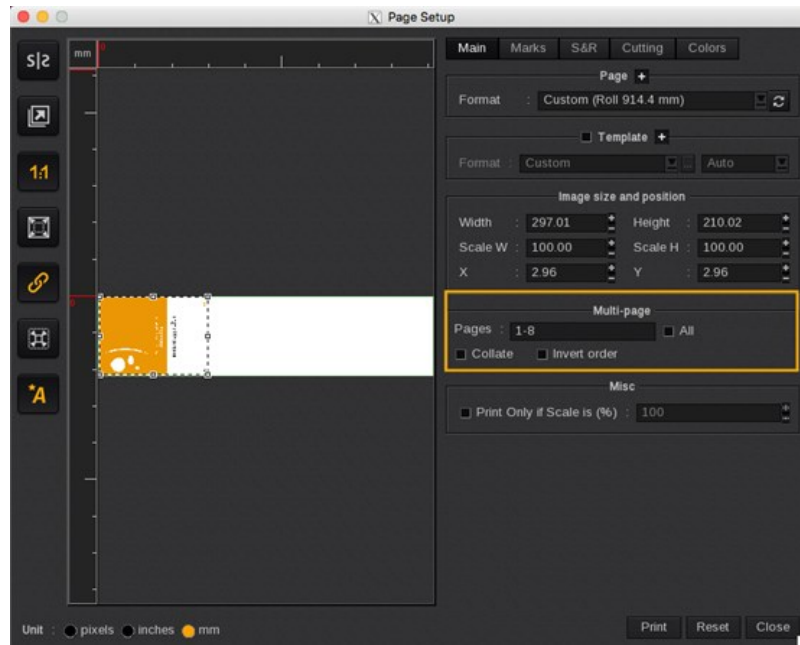


Multipage Collate

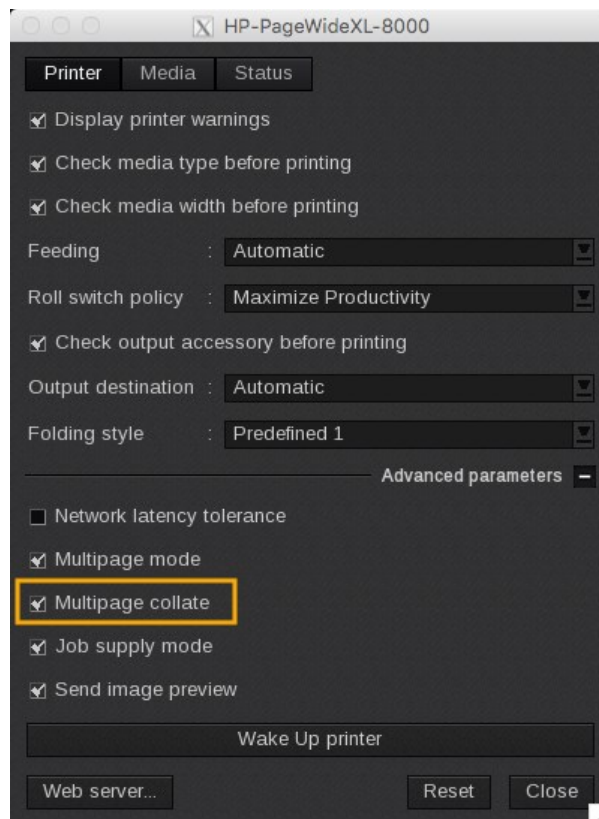
By default, the **Multipage mode** is active which is not compatible with the **Collate** option in the *Page Setup* window, **Main** tab. **Do not use this option, it is not supported.**

PRINTER PROPERTIES

Collate is a feature that groups the pages by individual copies (1-2-3...1-2-3...). When you print without it, the same pages are grouped together (1-1-1...2-2-2...).



To perform a **Collate** with the **Multipage** mode activated, please use the specific option in the *Printer Settings* window, in the Printer tab. The option is named **Multipage collate**.



Share your Caldera experience and discover our online help on:
calderadesk.caldera.com

CALDERA - 1 rue des Frères Lumière - P.A. d'Eckbolsheim
BP 78002 - 67038 Strasbourg Cedex 2 - France

www.caldera.com - Tel. +33 388 210 000 - Fax +33 388 756 242 - contact@caldera.com