

# SureColor P20000

## Technote

RIP SOFTWARE - VERSION 12 - CALDERA 2019



Table of Contents

Table of Contents 2

Driver History 3

Printer settings 4

Printer 4

Media 5

Status 7

Printer specifications 8

License Agreement

Copyright 2019 Caldera. All rights reserved.

All trademarks, logos and brand names mentioned in this publication are property of their respective owners.

All images and photographs here featured are the copyright of their respective owners.

Caldera reserves the right to modify software specifications and content cited in this document without prior notice.

## Driver History

Supported since **Version 10.2**

### Version 12 History

Release	Date	Comments
A (V12.1)	07/2019	Fix to bring back compatibility for macOS 10.11 (El Capitan), driver was not launching on v12.1.
B (V12.0)	06/2019	Fix borderless print top/bottom. More tolerant for check between media width and job width.
A (V12.0)	04/2019	Fix ink consumption report for Epson Precision Dot modes.

### Version 11 History

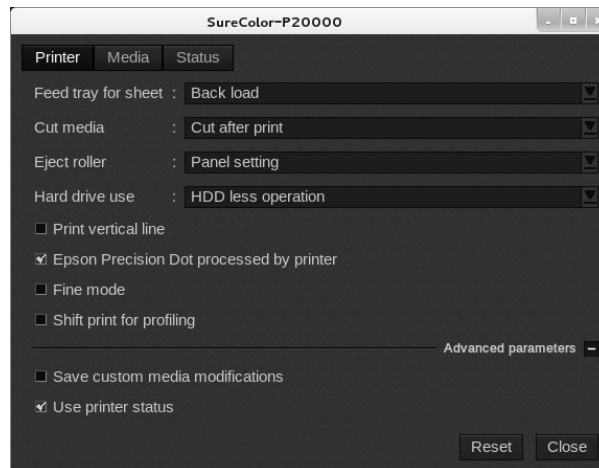
Release	Date	Comments
B (V11.2)	06/2019	Fix borderless print top/bottom. More tolerant for check between media width and job width.
A (V11.2)	04/2019	Fix ink consumption report for Epson Precision Dot modes.
A (V11.1)	07/2017	Add support for new print modes for Backlit media type with Epson Precision Dot mode (require firmware xx002H6 or later updates) + Fix Bug #5801 - Change the appearance when using Epson Precision Dot RGB and Epson Precision Dot RGB B&W modes to indicate the presence of a profile (similar to CMYK mode behaviour) (require build170616 or later) + Fix using "Front loading" in Epson Precision Dot mode
D (V11.0)	07/2017	Add support for new print modes for Backlit media type with Epson Precision Dot mode (require firmware xx002H6 or later updates) + Fix using "Front loading" in Epson Precision Dot mode
C (V11.0)	05/2017	Better handling when Epson Precision Dot is not processed by the printer.
B (V11.0)	04/2017	Small corrections in Status. Fix potential problem in "Rip then print". Fix for "Check driver settings" on macOS when using "Epson Precision Dot RGB".
A (V11.0)	11/2016	Epson Precision Dot" update + Fix "Use Printer Status" in USB + Allow sleeping mode in USB.

### Version 10 History

Release	Date	Comments
E (V10.2)	07/2017	Add support for new print modes for Backlit media type with Epson Precision Dot mode (require firmware xx002H6 or later updates) + Fix using "Front loading" in Epson Precision Dot mode
D (V10.2)	05/2017	Better handling when Epson Precision Dot is not processed by the printer.
C (V10.2)	04/2017	Small corrections in Status. Fix potential problem in "Rip then print". Fix for "Check driver settings" on macOS when using "Epson Precision Dot RGB".
B (V10.2)	11/2016	Epson Precision Dot" update + Fix "Use Printer Status" in USB + Allow sleeping mode in USB.
A (V10.2)	04/2016	Fix memory leaks causing dysfunctions after a certain amount of time on MAC OSX.

## Printer settings

### Printer



- **Feed tray for sheet:** select whether the **Front load** or **Back load** will be used to feed the sheets.
- **Cut media:** you can enable the embedded cutter and choose one of these options:
  - **Off:** the cutter is not used
  - **Cut after print:** enable the auto-cut after the print
  - **Print line:** print a cut line after the job
  - **Cut before and after print:** enable the auto-cut before and after the job. Take note that your print has to be set to borderless.
  - **Cut after print less waste:** enable the auto-cut to start closer to the job's border to generate less media waste. Take note that your print has to be set to borderless.
- **Eject roller:** this parameter should be set to **Panel setting** which is the default setting. If you experience the head rubbing against the paper, you can set **Eject roller** to **On**. You can also set it to **No** if you want.
- **Hard drive use:** this option defines the use of the printer hard drive:
  - **HDD less operation:** the hard drive is not used at all
  - **Save before the print:** it first saves the job then start the print
  - **Save before the print (leave data):** it first saves the job then start the print and keep the data on the hard drive
  - **Save and print:** it saves the job on the hard drive at the same time as printing
  - **Save and print (leave data):** it saves the job on the hard drive at the same time as printing and keep the file on the hard drive
- **Print vertical line:** it prints a vertical line alongside the job.

The settings above are functions you can enable directly on the printer panel.

- **Epson Precision Dot processed by printer:** used with an Epson Precision Dot profile, it reduces the amount of data transferred to the printer as the screening is made on the printer. It also increases the quality and reduces the blur / banding that could appear on the job.
- **Fine mode:** this mode uses only one of the two available print heads. The speed is reduced by half. Use this option if you experience banding.
- **Shift print for profiling:** you must use this option for full speed print. This will shift the print about 8 centimeters to compensate for a material defect that might produce a banding on the first centimeters of the print.

Depending on the resolution and/or quality it might be that the shift is not required. The driver will not apply the shift in such case.

You can use **Fine mode** to correct the blur issue without shifting but it limits the speed about half; **Fine mode** automatically ignores this parameter and do not apply the 8 centimeters compensation.

- **Save custom media modifications:** saves the media parameters as set in the Media tab. Take note that **Slot** must not be set to RIP settings and **Slot operation** must be on Set and select by RIP.
- **Use printer status:** the driver will react according to the printer status: wait the end of the previous print to launch a new one, check the job compatibility with the media loaded, etc.

## Media

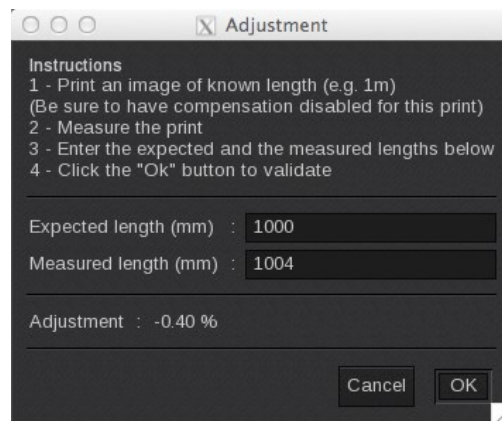
The screenshot shows the 'Media' configuration window for the SureColor-P20000 printer. The window is titled 'SureColor-P20000' and has three tabs: 'Printer', 'Media', and 'Status'. The 'Media' tab is selected, displaying settings for 'Plain Paper' (CMYKcmk / 300x300dpi / Draft - Bid). At the top right of the Media tab are 'Save' and 'Reload' buttons. The settings are organized into several sections:

- Compensation:** 'Horizontal compensation (%)' and 'Vertical compensation (%)' are both set to 0.00, each with a 'Compute...' button.
- Slot and Operation:** 'Slot' is set to 'RIP settings' and 'Slot operation' is set to 'Select by RIP'.
- Media and Distribution:** 'Reference Media' is 'Plain Paper', 'Dot distribution' is 'Specialized', 'Black cartridge' is 'Photo', and 'Multi-strike' is '2'.
- Timing and Gaps:** 'Dry time per page (s)' is '0', 'Platen gap' is 'Default', and 'Feed adjustment (%)' is '0.00'.
- Adjustments:** 'Automatic offset feed adjustment' and 'Automatic left/right adjustment' are both 'On'.
- Suction and Skew:** 'Media suction (%)' is '0', 'Feed adjustment offset (%)' is '0.00', 'Roll tension' is 'Default', 'Media thickness (mm)' is '0.00', 'Media suction (slot)' is 'Default', and 'Remove skew (slot)' is 'On'.
- Advanced Parameters:** A section labeled 'Advanced parameters' contains 'Dry time per pass (s)' set to '0' and 'Ink Density Factor (%)' set to '100.00'.

At the bottom right are 'Reset' and 'Close' buttons.

- **Information:** at the top of the window, you are able to see information about your media. There you have access to two actions:
  - **Save:** when you click on this button, the current media settings are saved with the selected media profile (printer, media, resolution, mode) so there will apply for any new job using the same print configuration. If you don't save, the changes you made are only applied to the current job.
  - **Reload:** will revert back to default as set during profiling or to the last saved changes.
- **Horizontal compensation (%)**: we recommend not to modify this. Any deviation is likely to be mechanical on the printer's side.
- **Vertical compensation (%)**: this can be useful if you detect an increase or decrease in the length due to heating or media tension which is common when printing on vinyl or textiles for example. To calculate the compensation, click **Compute** and follow the software's instructions.

# PRINTER SETTINGS



- **Slot:** choose the slot number that contains the adjustments for your media. If you choose RIP settings, the driver apply the settings displayed on the RIP driver.
- **Slot operation:** choose if the selected slot will be:
  - Select by RIP: the media settings used are those contained in the selected slot
  - Set and select by RIP: the RIP save its driver settings in the selected slot
- **Reference Media:** select the reference media that is the closest to the actual media. The **reference media** contains predefined settings you can use to set your media parameters.
- **Dot distribution:** this option allows you to choose the drop limitation. Basic uses the general limitation whereas Specialized changes the limitation accordingly to the media chosen.

**We strongly advise you to set this directly on the printer using the dedicated wizard.**

- **Black cartridge:** set the black cartridge to either Photo or Matte
- **Multi-strike:** apply multiple strike on the print: the job will be printed between 2 and 9 times on the same spot accordingly to your setup
- **Dry time per page (s):** indicate the time in seconds allowed for the page to dry (max 3600 seconds)
- **Platen gap:** set the gap between the head and the media
- **Feed adjustment (%):** this setting can be used in case of banding issues (horizontal striped lines or uneven colors) because of media stretch. You can enter values from -1 to 1.53%

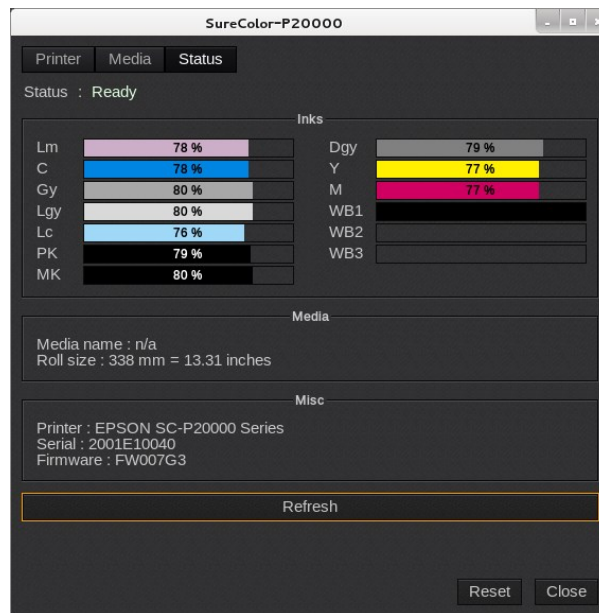
**We strongly advise you to set this directly on the printer using the dedicated wizard.**

- **Automatic offset feed adjustment:** when enabled and on On: the printer detects the actual amount of paper feed via a CCD sensor and uses this information to make real-time adjustments to the paper feed.
- **Automatic left/right adjustment:** when enable and on On: it reduces skew caused by the paper feed.
- **Media suction (%):** it is important to choose the proper amount of suction for the paper used in order to maintain the correct distance between the paper and the print head. Choosing too high value for thin or soft paper will increase the distance between the paper and the print head, causing print quality to decline or preventing the paper feeding correctly. In such cases, you will need to lower the paper suction.
- **Feed adjustment offset (%):** this setting is complementary to **Feed adjustment**.

**We strongly advise you to set this directly on the printer using the dedicated wizard.**

- **Roll tension:** select the roll media tension: Standard is the mode used by default, if wrinkles appear when printing on roll paper, you can select High or Higher in order to correct it.
- **Media thickness:** enter the media thickness. If it is deactivated, the reference media thickness will be used.
- **Media suction (slot):** it is identical to **Media suction** but is used when the media settings are set for the slot.
- **Remove skew (slot):** select whether to enable (On) or disable (Off) paper skew reduction while roll paper is loaded in the printer. Setting applied for the slot.
- **Dry time per pass (s):** select the time the print head pauses to allow drying after each pass. Depending on the paper type, the ink may take a while to dry. If the ink blurs on the paper, set a longer time for drying the ink. Increasing the drying time increases the time needed to print.
- **Ink Density Factor (%):** maximum level of ink allowed. Increasing this factor might increase the Gamut but it might as well lead to over-inking issues.

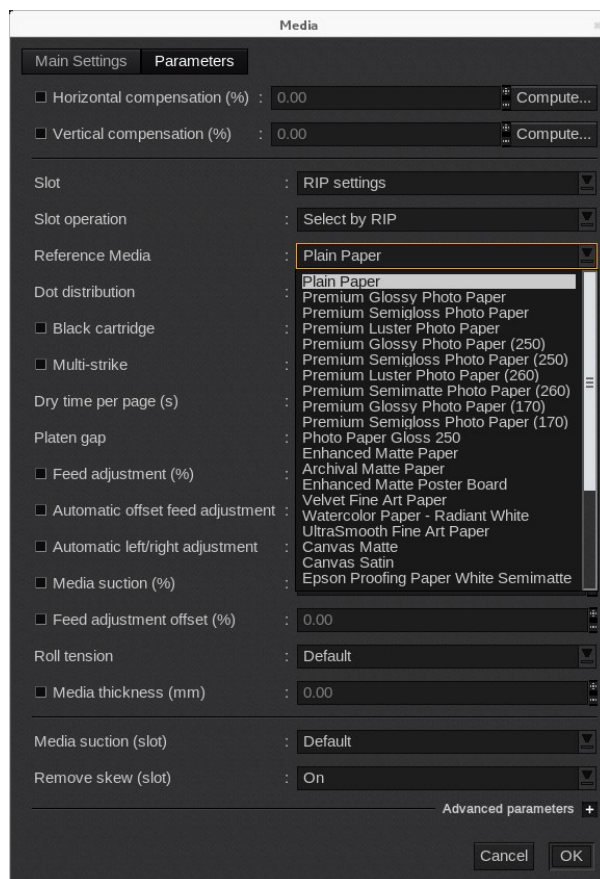
## Status



- **Status:** Global state of the printer: Ready, Not\_available. All data are coming from the printer, if it is not\_available, nothing can be displayed.
- **Inks:** Inks and Waste Boxes levels
- **Media:** Info about the media loaded on the printer
- **Misc:** complementary info about the printer (model, serial number, firmware version)
- **Refresh:** button to refresh the tab.

## *Printer specifications*

It is very important, while creating a new profile, to select the proper **Reference media**. Results can be inconclusive if not.



You also have to activate **Fine mode** or **Shift for profiling** in order to be able to create a new profile.

If you choose to activate **Shift for profiling**, you will be able to deactivate it in the **Print** module but be careful, a blur may appear on the first centimeters of the print.



Share your Caldera experience and discover our online help on:  
[calderadesk.caldera.com](https://calderadesk.caldera.com)

CALDERA - 1 rue des Frères Lumière - P.A. d'Eckbolsheim  
BP 78002 - 67038 Strasbourg Cedex 2 - France

www.caldera.com - Tel. +33 388 210 000 - Fax +33 388 756 242 - [contact@caldera.com](mailto:contact@caldera.com)