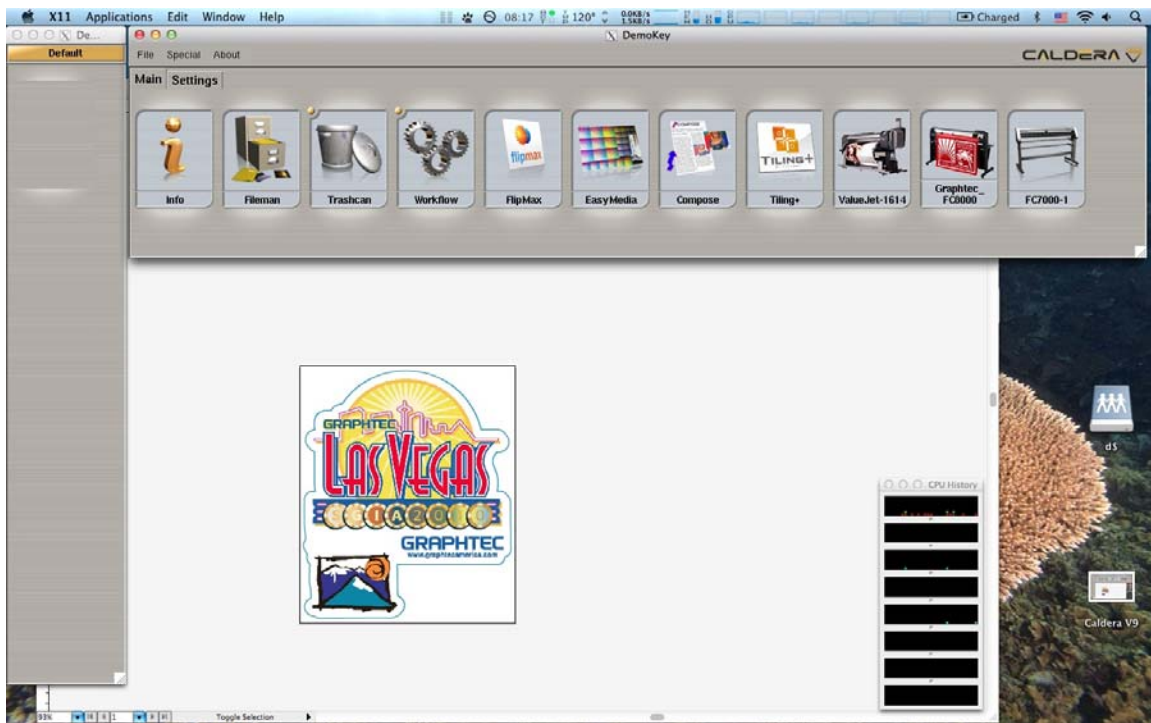


## Graphtec FC2250 Interfacing with Caldera

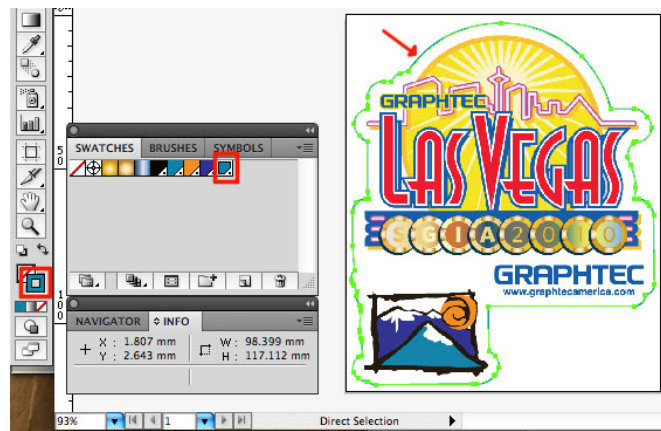
The following serves as a general guideline in referencing Caldera V9 RIP with the FC2250 flatbed cutter, file setup is done with Illustrator in this writeup. As of this writing, Caldera is supporting Graphtec FC2250 via its FC7000 driver, we will update the info as Caldera releases the native FC2250 driver. This procedure works for all FC7000's, FC8000's, FC2250's

1. While FC2250 is in **READY** mode, press **Pause >> Next >> Next >> I/F >> Command >> GP-GL >> Enter**.
2. Start Caldera with Graphtec FC7000 configured.



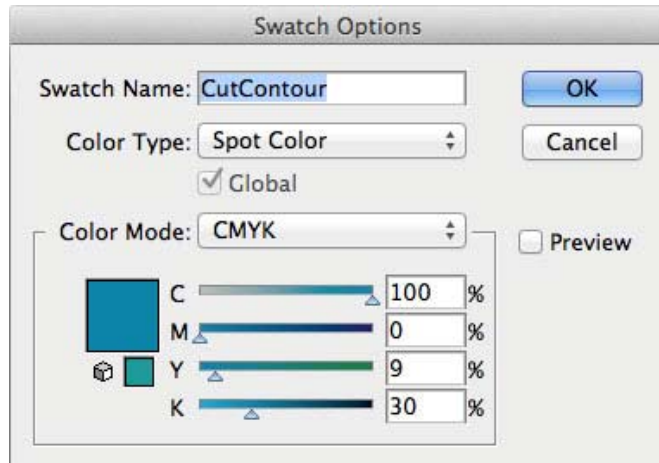
3. Assign color to the cutline (indicated by **red arrow**), drag and drop the **stroke color** (1<sup>st</sup> **red box**) to the **Color Swatch** (2<sup>nd</sup> **red box**).

Double click on the 2<sup>nd</sup> **red box** to continue.

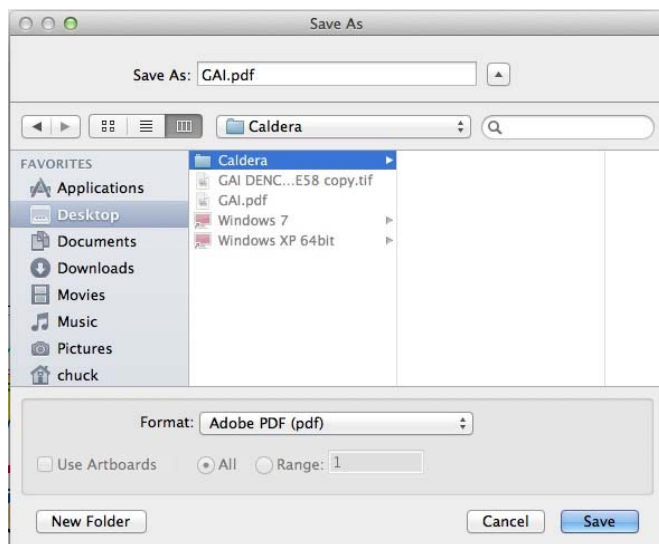


4. Choose Color Type for **Spot Color**, set Swatch Name to **CutContour**, click **OK** to continue.

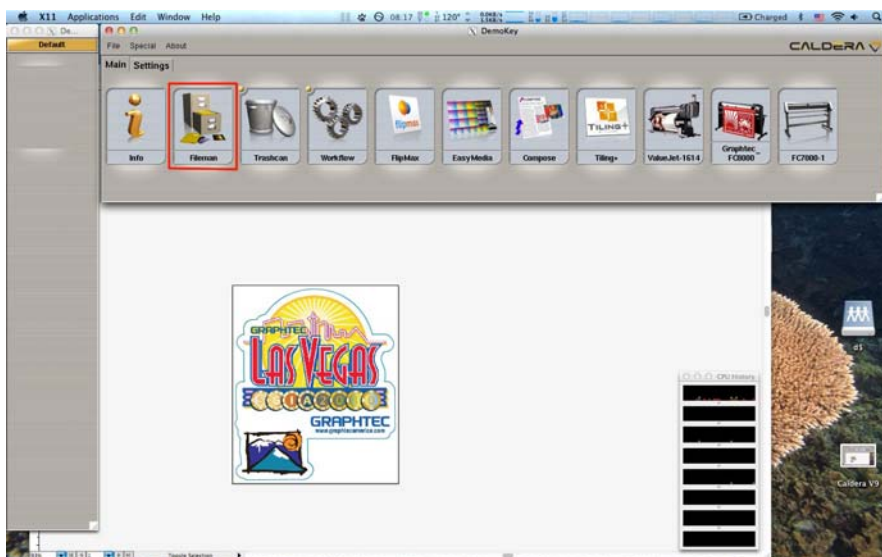
If two spot color/contour cut lines have been created here, i.e., CutContour\_kisscut, CutContour\_perfcut, or CutContour\_thrucut, with Caldera, you will be able to send the cut conditions to your Graphtec cutter all at once.



5. Save the file as **.pdf** or **.eps** as you prefer.

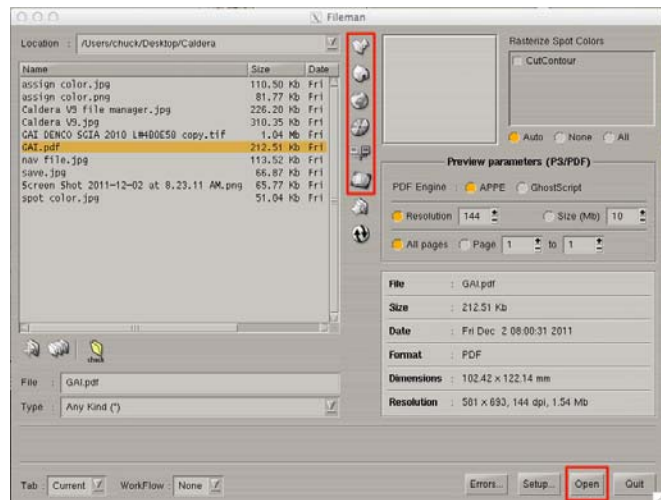


6. Double click on **File Manager** to select job.



7. Click on the corresponding icon in the red box to navigate to your file location, click on it once to select, **Open** to access the file.

Multiple files can be selected or accessed at a time.



8. Selected file is added to the workspace.

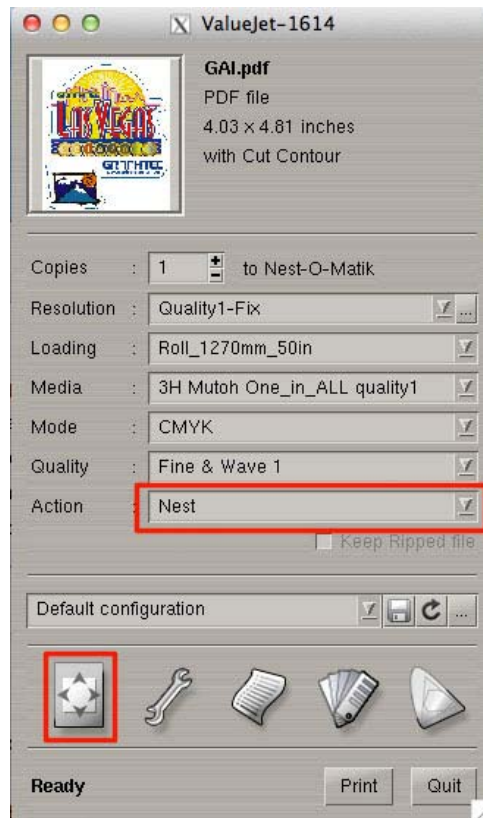


9. Drag and drop this icon to your printer's icon.

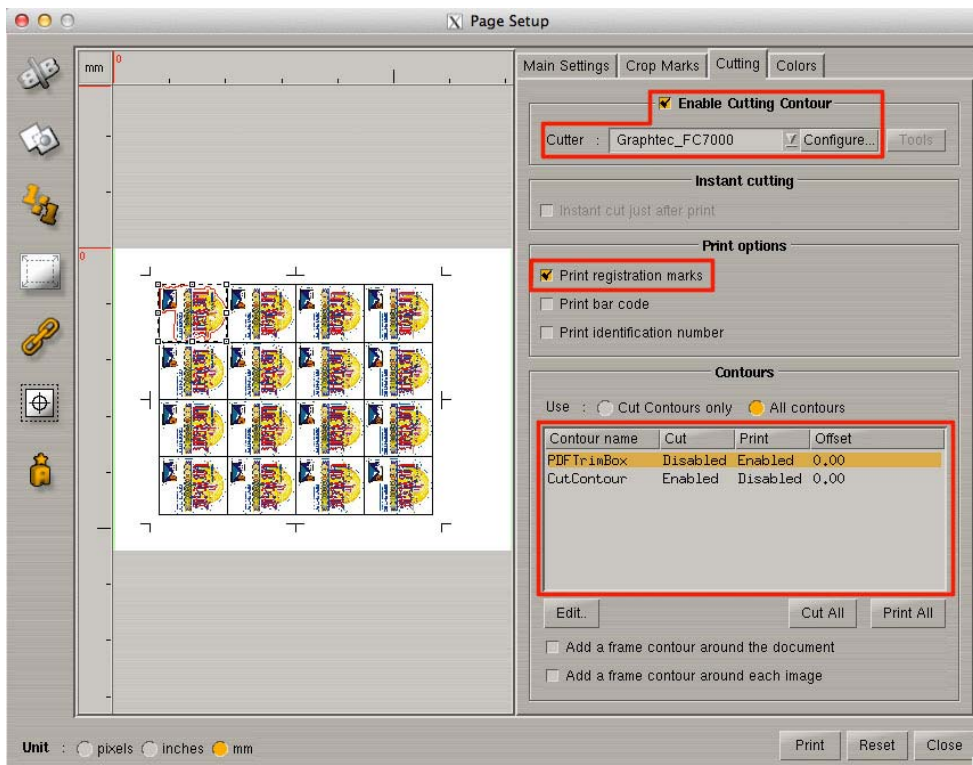


10. Printer interface icon will show up.

Change **Action** to Nest,  
Click on Page icon to nest the  
job.



11. Be sure scale is set to 100%, and define number of copies that you want.

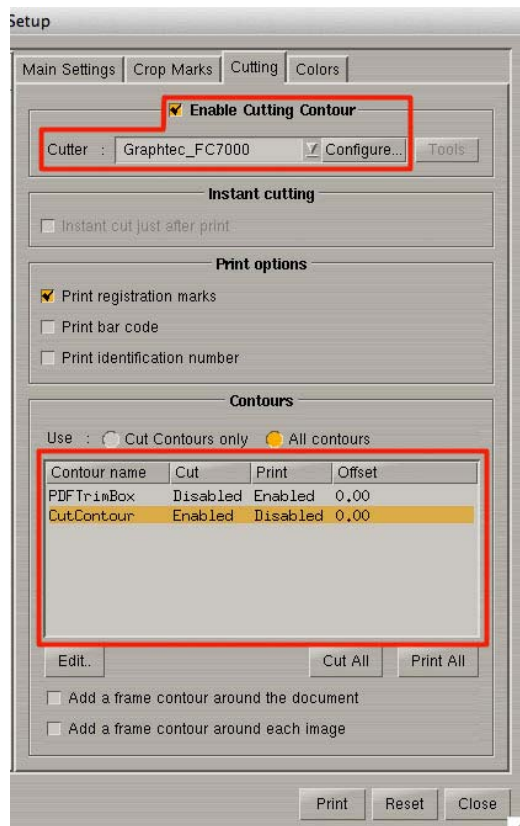


12. Click on **Crop Marks >>**  
select check box **Crop Marks**.



13. Click on **Cutting >>** select  
**Enable Cutting Contour**,  
choose **FC7000** model, make  
sure “Print registration marks” is  
checked.

When ready, click on Print to  
start.



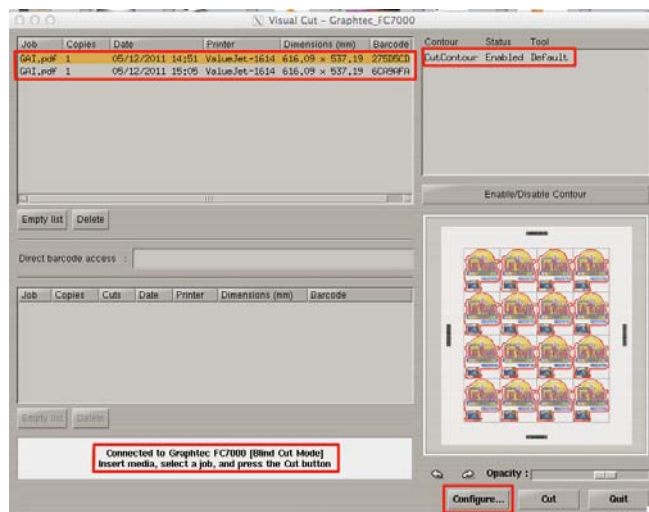


14. When finished printing, click on **FC7000** icon to setup the cutting parameters.



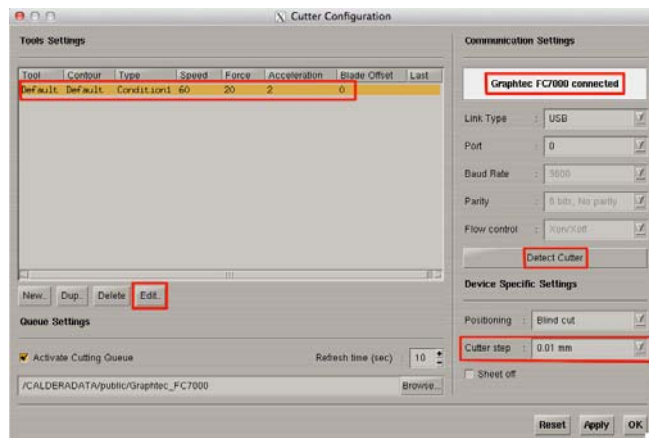
15. Click on red rectangle to check these settings, and make sure the connection to the cutter is online.

If at **Step 3, 4** a second spot color/contour has been created, i.e., CutContour\_kisscut, CutContour\_perfcut, or CutContour\_thrucut, you can click on **Configure** to specify the precise cutting parameters within Caldera.



16. Be sure it is showing that the Graphtec FC7000 is connected, or click Detect Cutter before continue. Make sure Cutter step matches with Step Size on the cutter.

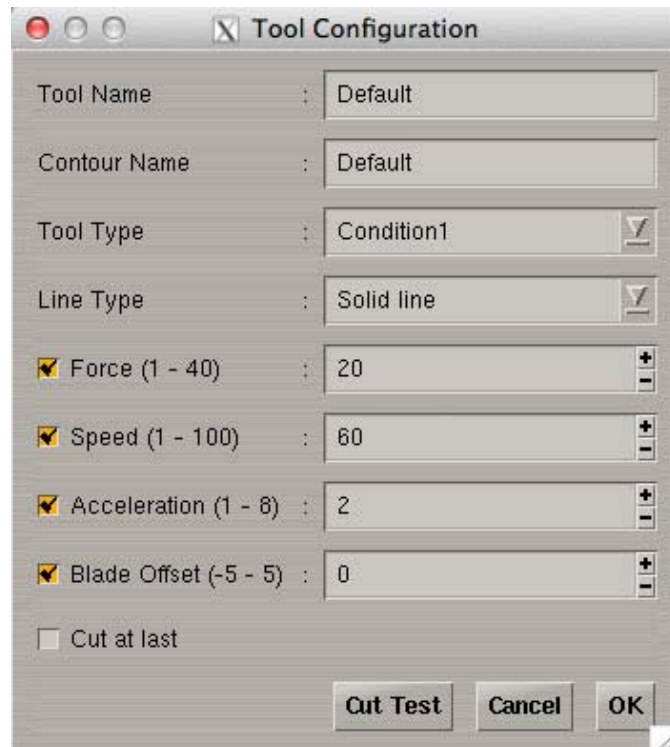
Select the condition and click on Edit.



17. Use condition 1 – 4 for kisscut, enter correct force and speed, always keep acceleration at 3 or lower for better quality, blade offset should always be at “0” zero.

If two spot color/contour cut has been specified, see Step 15, use condition 5 – 8 for thru cut or percut if using FC7000, FC8000.

Click on **OK** and again on **OK** to continue.



18. Leave ½” gap between push rollers and reg. marks, align reg. marks with push roller frame, choose Roll 2 Rear set. Using arrow keys to move the blade into the center of the L-shape mark.

Make sure the orientation matches with what's on the screen preview.

For FC2250, place the print on the table so the reg. mark is 1” away from the lower left corner of the cutting mat.

Click **Cut** to start cutting.

If Mark Scan Error is displayed, redo Step 16 and 18.

