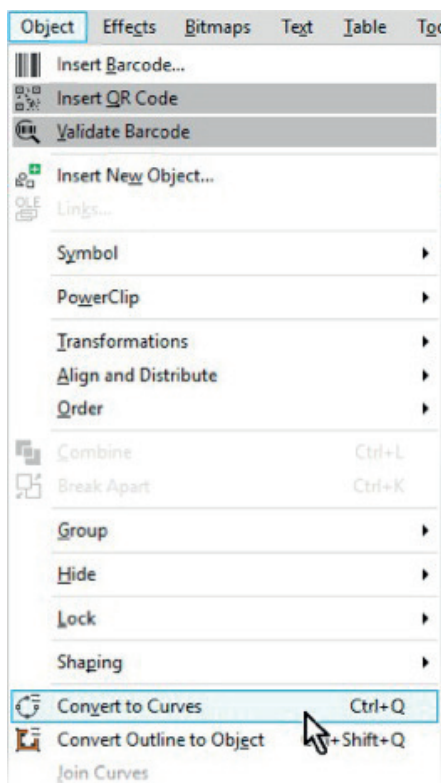


To be able to use the internal bleeding (Lettering function) into Caldera V11.1, you need to apply some specific features on the design file, before loading through Caldera. Here is the procedure to make your file compatible with the internal bleeding (Lettering function) into Caldera, for Corel Draw (these are captures from CorelDraw 2017 but can apply also for lower versions).

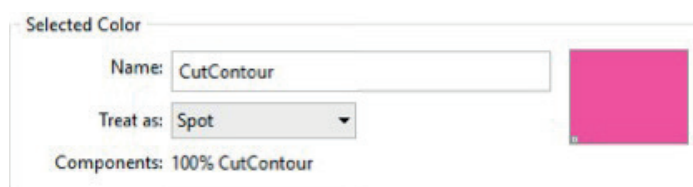
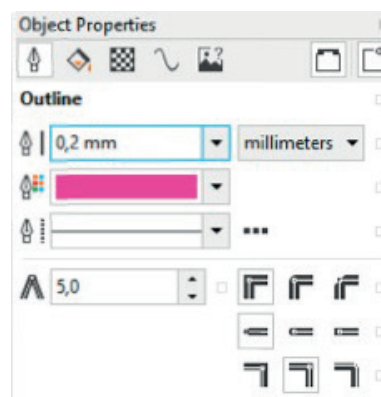
- 1) For text not vectorized yet, go to « **Object** » then choose « **Convert to Curves** ».

After clicking the option, your text looks like the right below capture.



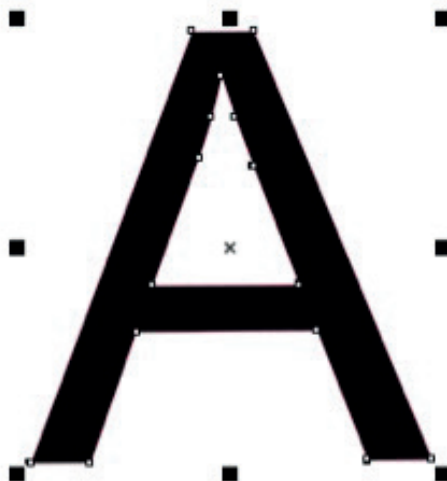
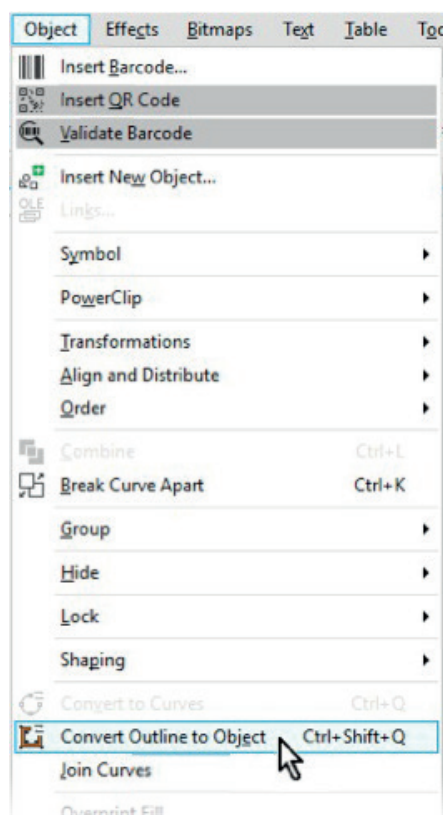
- 2) Apply a outline to your shapes with the desired **CutContour** name. Put 0,2 mm thickness.

Don't forget this specific color must be a spot color.

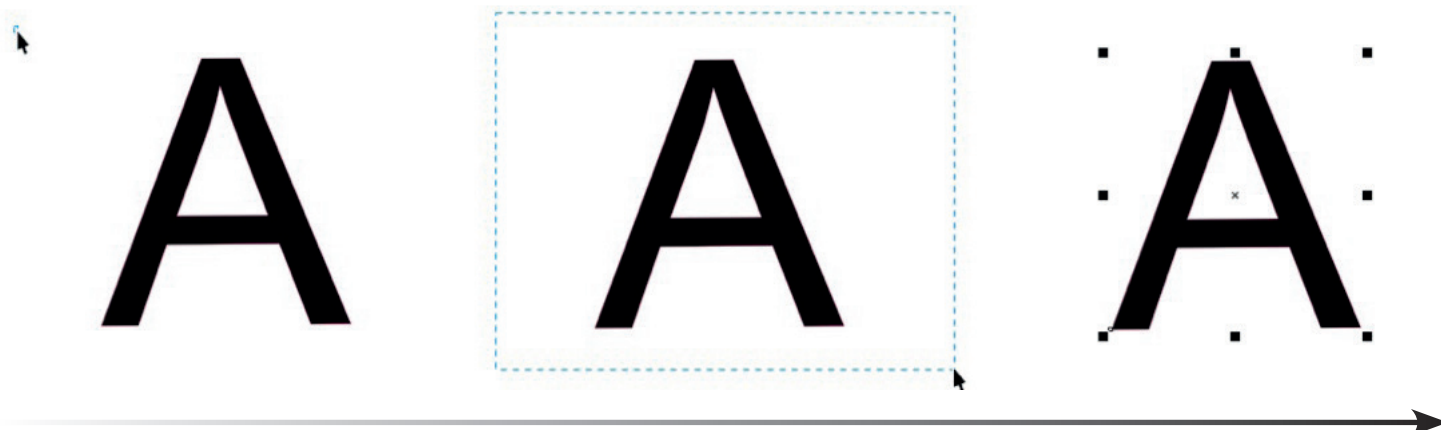


3) Select your design and go to « **Object** » then « **Convert outline to object** ».

After clicking the option, your object looks like the right below capture. You can select several items simultaneously.



4) Select the targeted area (click and stretch until all the objects selected)

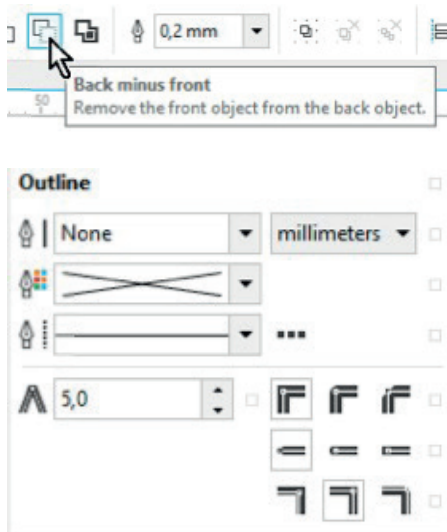


Now, new options are displayed.

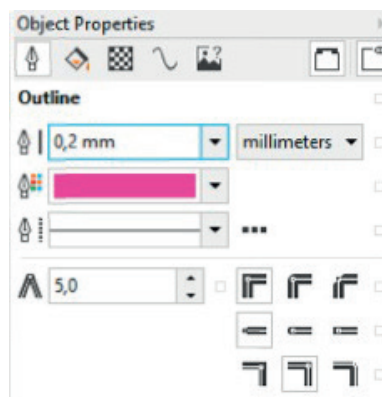


5) Choose the option « **Back minus front** ». 

After clicking the option, your object looks like the right below capture and notice that the outline disapared.



4) Re-apply the same outline as before to your shapes (with the desired **CutContour** name with 0,2 mm thickness).



5) Export to PDF your project. After loading into Caldera, internal bleeding is working.

