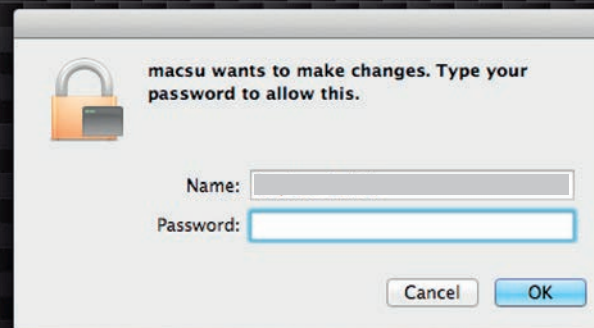


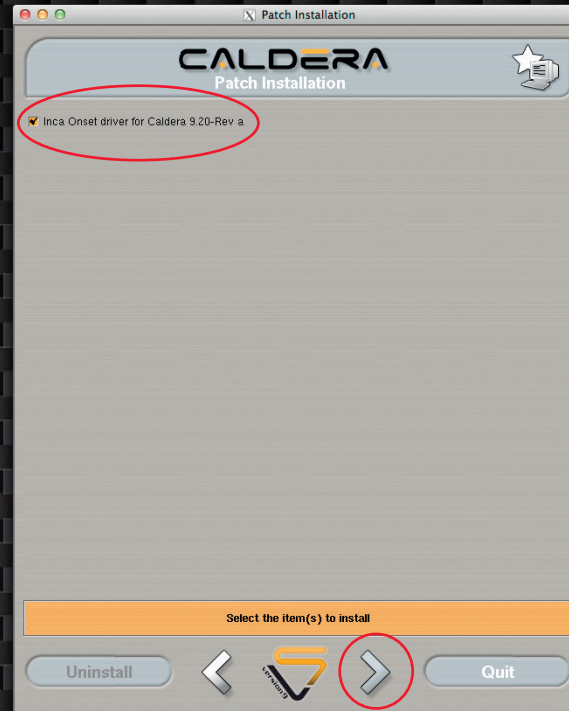
LOCATE THE "INCA-ONSET-920-A.CALPATCH" AND DOUBLE CLICK



ENTER THE ADMINISTRATOR PASSWORD



PRESS THE ">" BUTTON



CHECK THE PRINTER SELECTION IS CORRECT  
& PRESS THE ">" BUTTON



PRESS THE "THUMBS UP" TO INSTALL





PRESS TO "YES" AGREE TO INSTALLATION

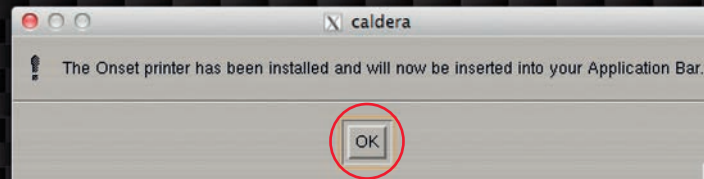


PRESS TO "OK" TO ACKNOWLEDGE  
PRINT SERVER STOPPING

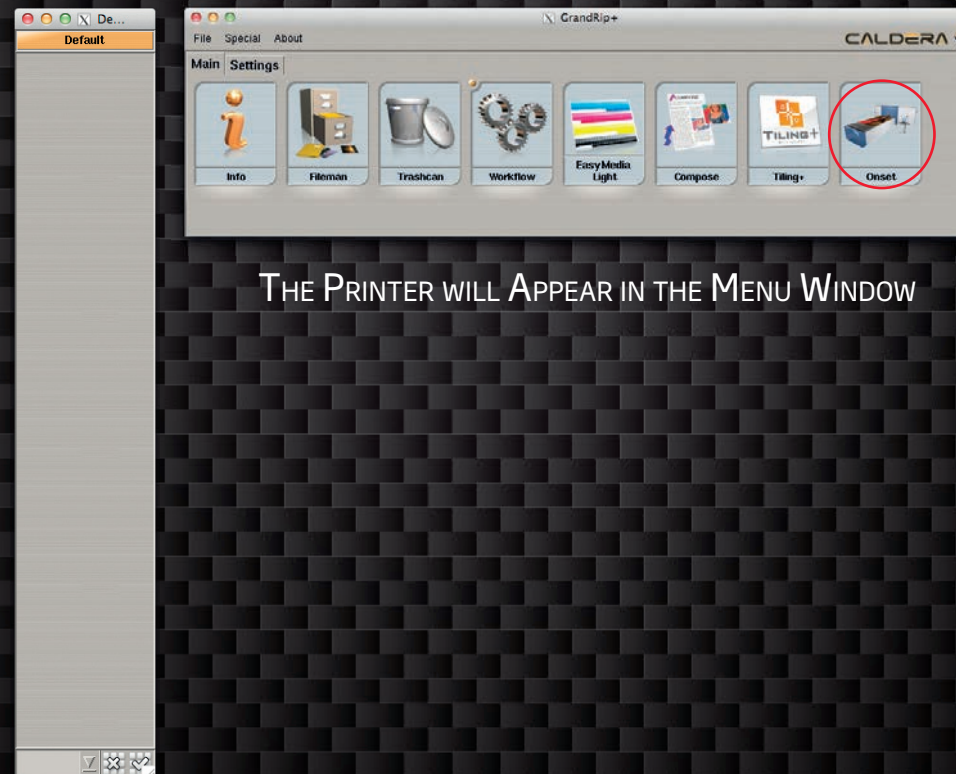


PRESS TO "OK" TO ACKNOWLEDGE  
INSTALLATION IS COMPLETE

## OPEN CALDERA

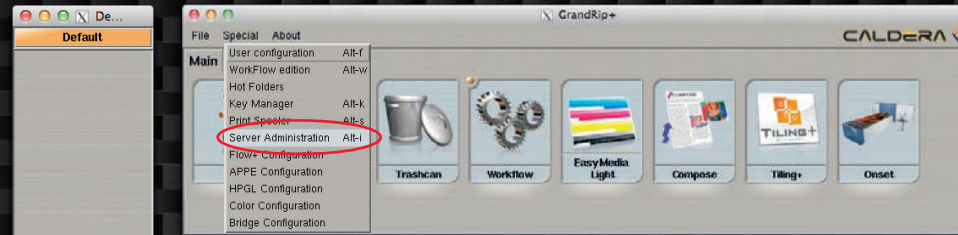


PRESS TO "OK" TO ACKNOWLEDGE  
PRINTER HAS BEEN INSTALLED

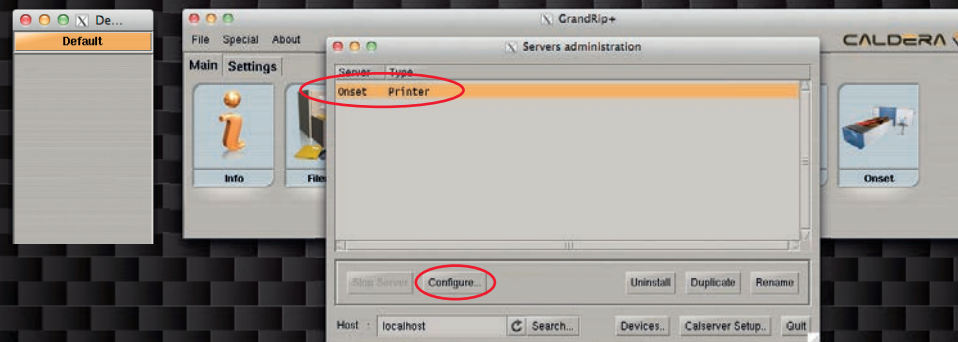


THE PRINTER WILL APPEAR IN THE MENU WINDOW

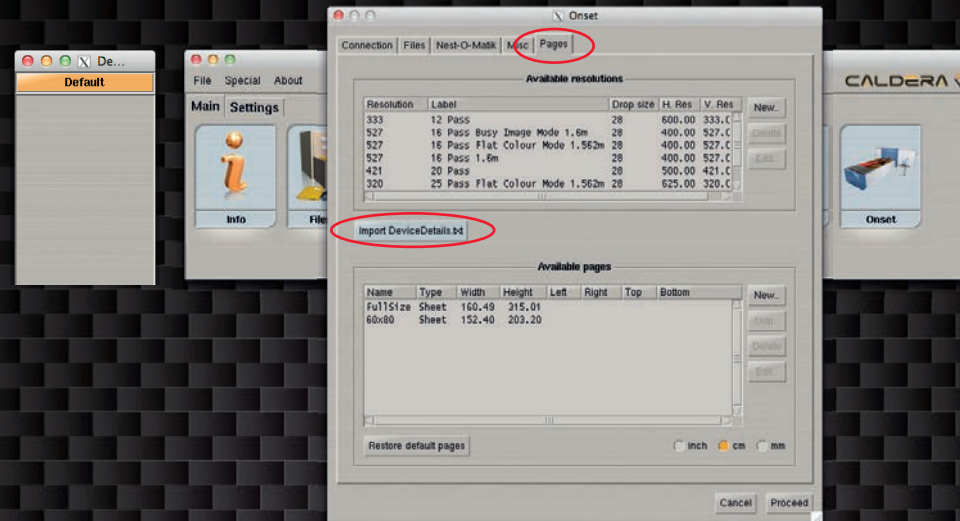




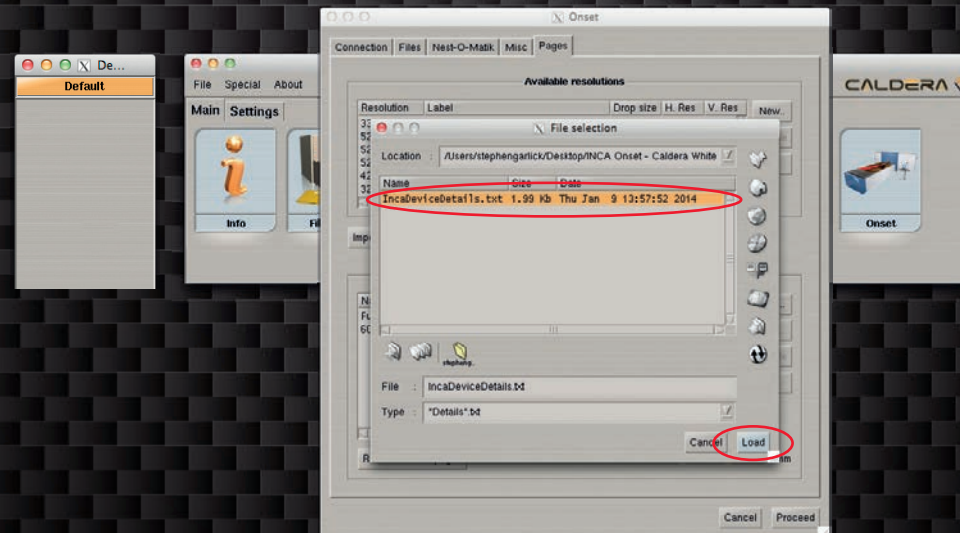
OPEN THE "SPECIAL" MENU AND SELECT  
"SERVER CONFIGURATION"



SELECT THE "ONSET" FROM THE SERVER LIST  
AND PRESS "CONFIGURE..."

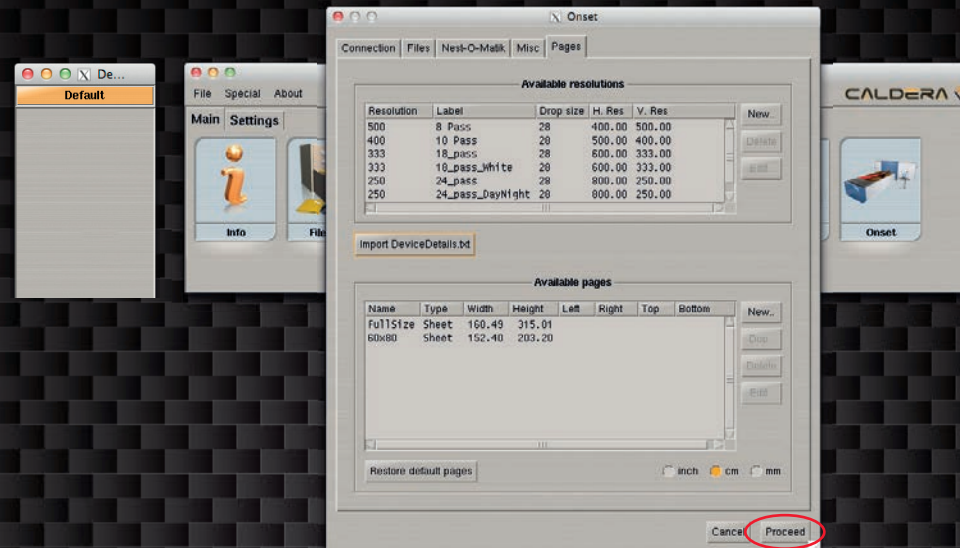


SELECT THE "PAGES" TAB AND PRESS  
"IMPORT DEVICE DETAILS.TXT"

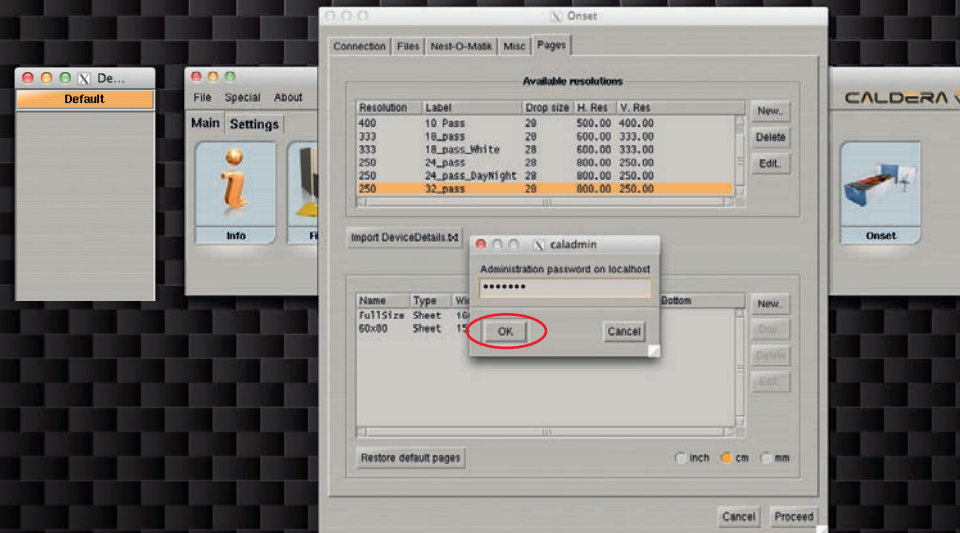


LOCATE THE "INCA DEVICE DETAILS.TXT"  
AND PRESS "LOAD"

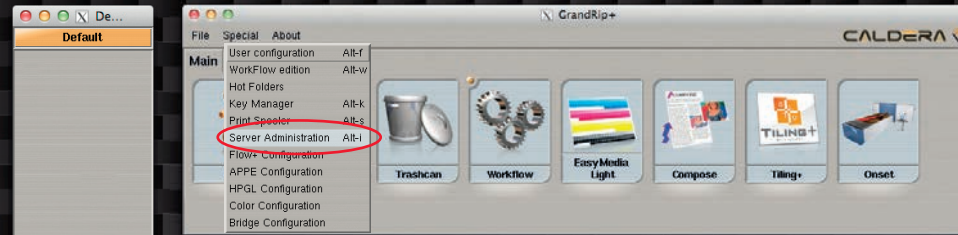




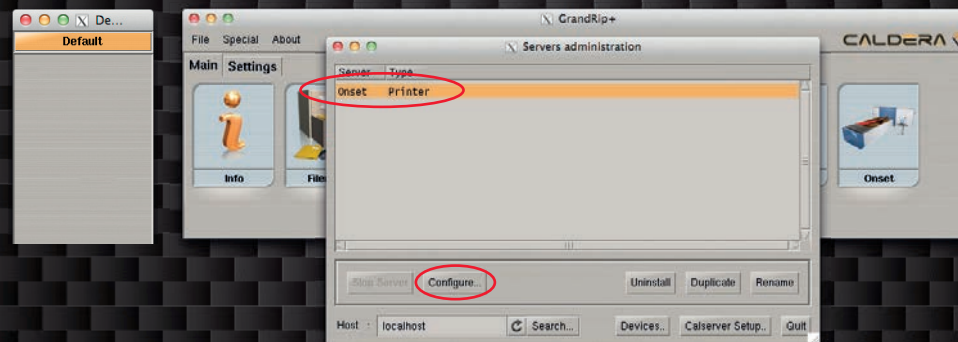
PRESS "PROCEED"



ENTER THE PASSWORD "caldera"  
(LOWERCASE) AND PRESS "OK"

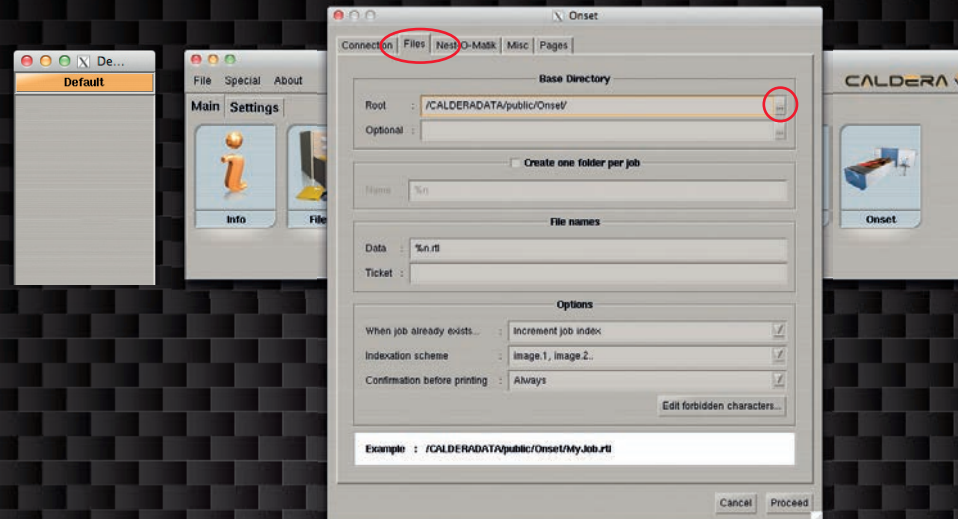


OPEN THE "SPECIAL" MENU AND SELECT  
"SERVER CONFIGURATION"

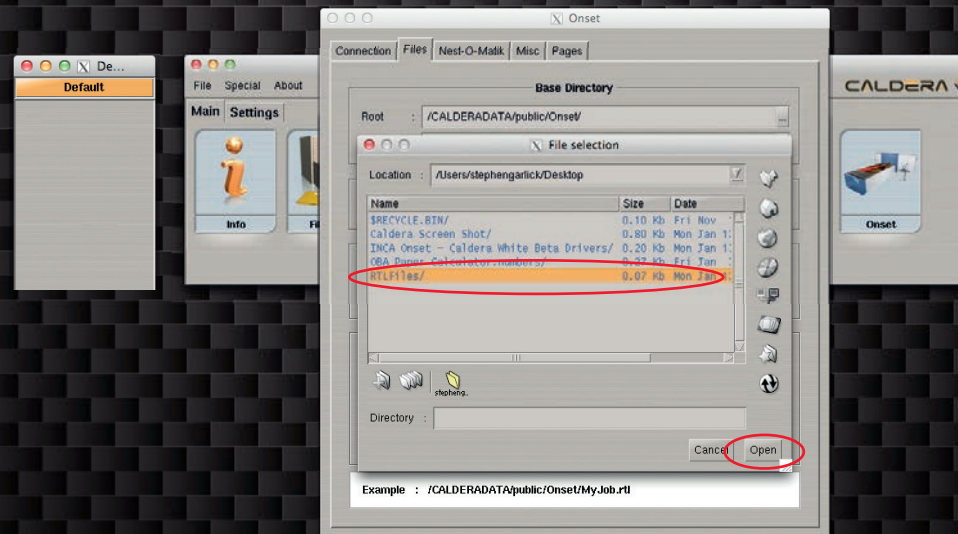


SELECT THE "ONSET" FROM THE SERVER LIST  
AND PRESS "CONFIGURE..."

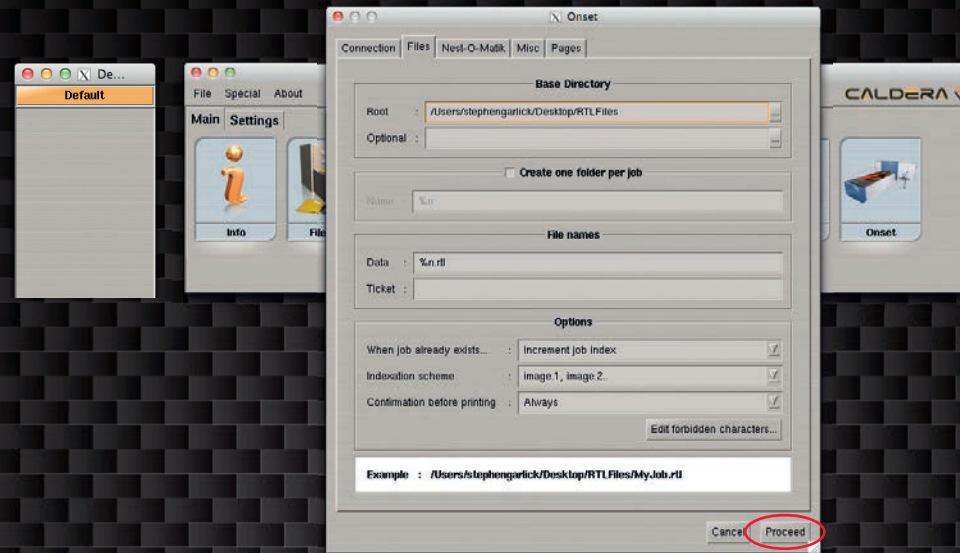




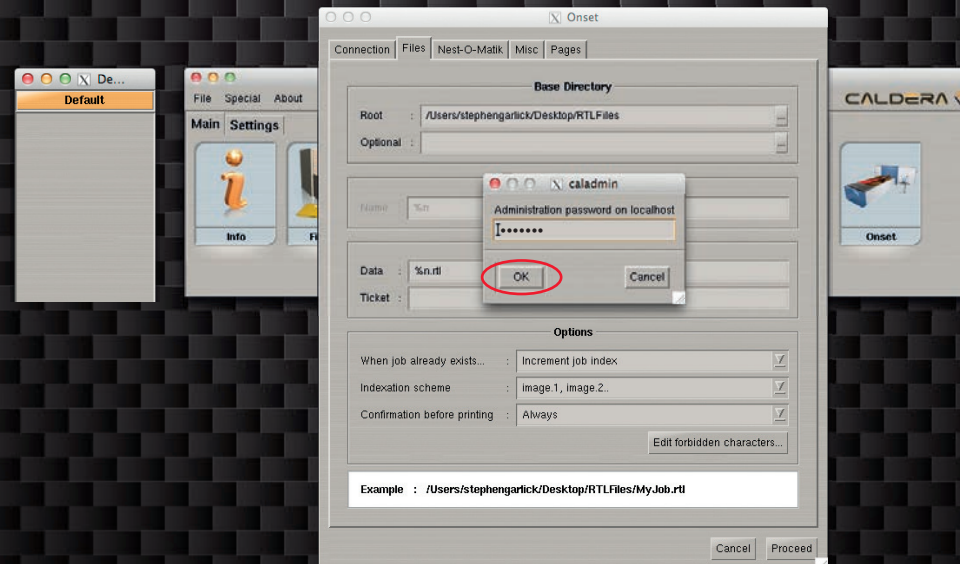
SELECT THE "FILES" TAB AND PRESS THE  
BUTTON AT SIDE OF THE ROOT DIRECTORY



LOCATE AND OPEN THE "RTLFILES" FOLDER  
EITHER LOCALLY OR ON THE INCA DEVICE. PRESS "OPEN"

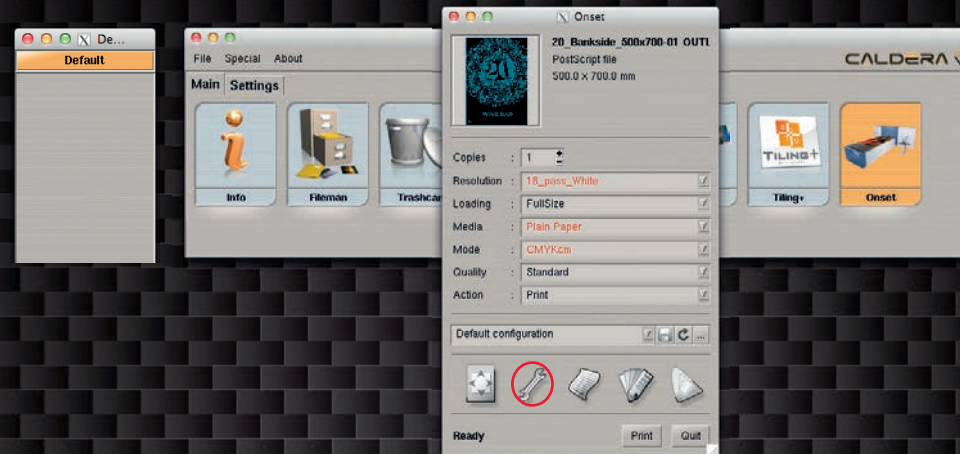


PRESS "PROCEED"

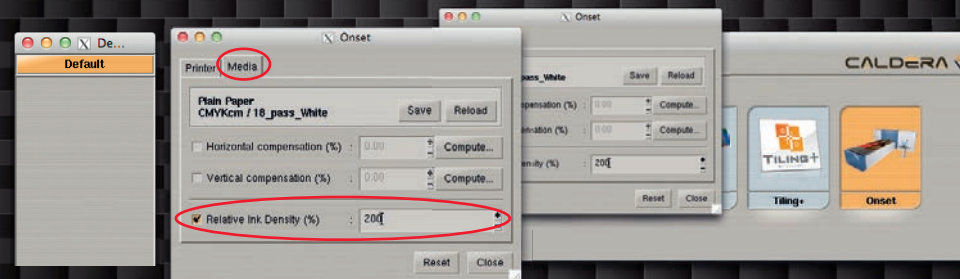


ENTER "caldera" (LOWERCASE)  
AND PRESS "OK"

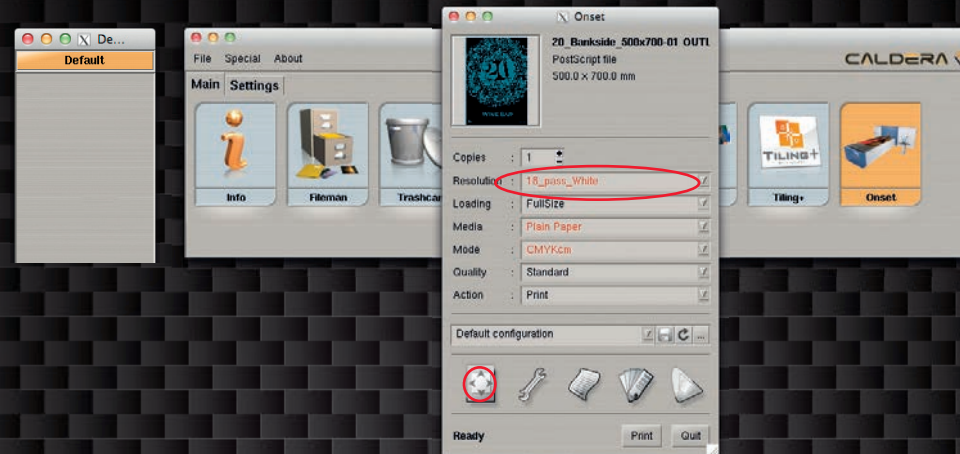




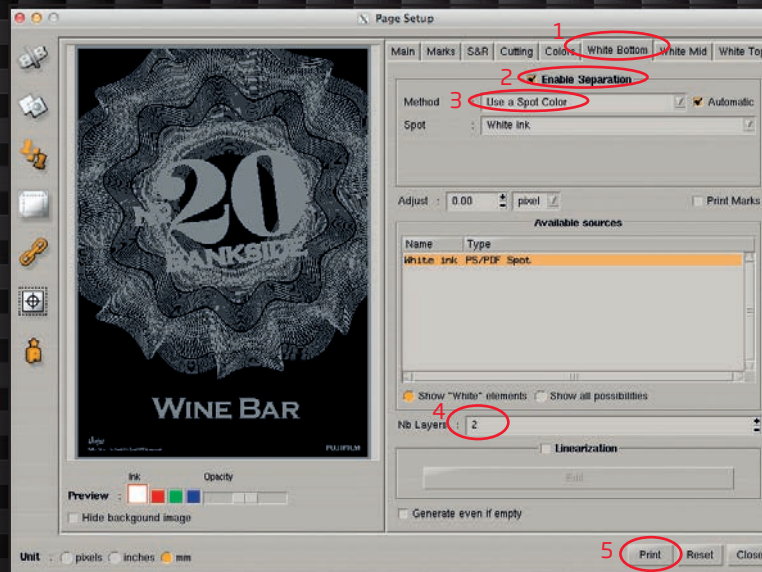
OPEN THE "SET UP"



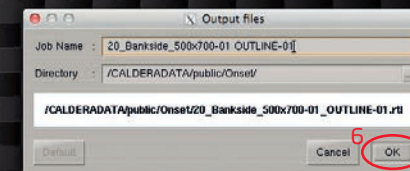
SELECT THE "MEDIA" TAB  
SELECT AND ENTER THE REQUIRED  
RELATIVE INK DENSITY (%)  
PRESS "CLOSE"



SELECT A RESOLUTION (PASS MODE) ENDING IN "WHITE" OPEN THE "IMAGE POSITION"



1. SELECT THE "WHITE BOTTOM" OR "WHITE OVER" TAB
2. ENABLE SEPARATION
3. SELECT THE WHITE "METHOD"
4. SELECT THE NUMBER OF WHITE LAYERS
5. PRESS "PRINT"



6. PRESS "OK"

\*\*\* PLEASE NOTE: THE CORRECT PMD'S MUST HAVE BEEN INSTALLED IN THE PMDFOLDER ON THE INCA DEVICE