

# XF640

## Technote

RIP SOFTWARE - VERSION 11 - CALDERA 2017



## Table of Contents

|                       |    |
|-----------------------|----|
| Table of Contents     | 2  |
| Drivers History       | 2  |
| Printer settings      | 3  |
| Printer               | 3  |
| Media                 | 4  |
| Media: Override       | 6  |
| Status                | 7  |
| Inks                  | 8  |
| Printer specificities | 9  |
| Custom inks           | 9  |
| Print modes           | 10 |

### License Agreement

Copyright 2017 Caldera. All rights reserved.

All trademarks, logos and brand names mentioned in this publication are property of their respective owners.

All images and photographs here featured are the copyright of their respective owners.

Caldera reserves the right to modify software specifications and content cited in this document without prior notice.

### Drivers:

- Roland-XF640: Eco-solvent 2xCMYK
- Roland-XF640-FPG-4C: Water-based 2xCMYK
- Roland-XF640-FPG-6C: Water-based CMYKcm\*
- Roland-XF640-FPG-8C: Water-based CMYKcmOG \*
- Roland-XF640-WBASE-4C: Water based 2xCMYK for custom water-based inks.

\* Driver supports custom **NColor** modes (**NColor key required**) and ink channel reordering.

It is very important to use the correct driver according to the printer's ink setup, because the print modes are not the same. Do not use 4 color driver to print in CMYK mode on a 6- or 8-colors printer. The output will not be correct. It is OK to print with CMYK mode on a 6- or 8-color driver.

### Drivers History

#### XF640

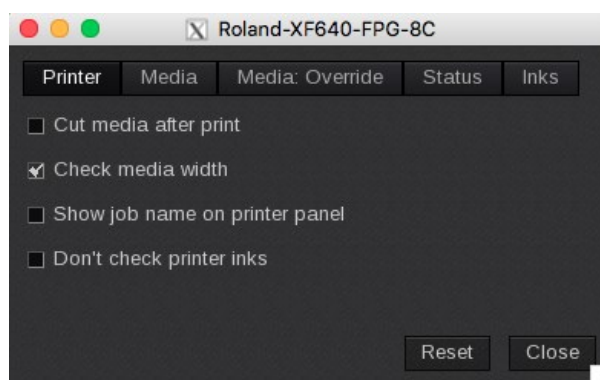
Supported since **Version 9.10** and **Version 9.20** for the WBASE-4C

#### Version 10 History

| Release   | Date    | Comments  |
|-----------|---------|---|
| A (V10.1) | 12/2015 | (except for the WBASE-4C) Added support for MAX3 EcoSOL inks. |

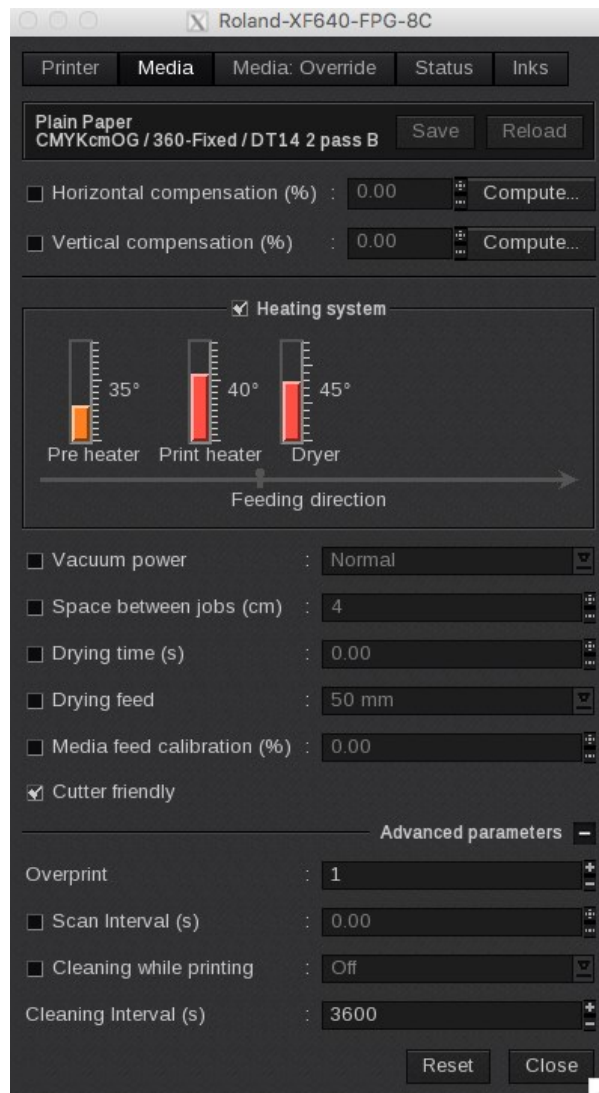
# Printer settings

## Printer

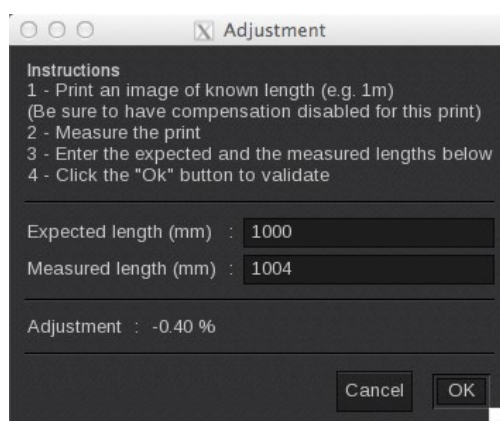


- **Cut media after print:** it enables the embedded cutter and automatically cuts the job after the print.
- **Check media width:** a warning is shown if the media width is smaller than the printed document.
- **Show job name on printer panel:** if enabled, it displays the job name on the printer panel screen. When disabled, the printer panel shows the current print mode.
- **Don't check printer inks:** doesn't display a warning if the printer inks do not match the selected print mode. When disabled, a warning is shown when a required ink is missing in the printer.
- **Reset:** This **Reset** button allows you to come back to the original (default) options. Advanced ones are also concerned by this action.

## Media



- **Information:** at the top of the window, you are able to see information about your media. There you have access to two actions:
  - **Save:** when you click on this button, the current media settings are saved to the selected media profile (printer, media, resolution, mode) so there will be applied for any new job using the same print configuration. If you don't save, the changes you made are only applied to the current job.
  - **Reload:** will revert back to default as set during profiling or the last saved changes.
- **Horizontal compensation (%)**: we recommend not to modify this. Any deviation is likely to be mechanical on the printer's side.
- **Vertical compensation (%)**: this can be useful if you detect an increase or decrease in the length due to heating or media tension which is common when printing on vinyl or textiles for example. To calculate the compensation, click **Compute** and follow the software's instructions.



Disabling the checkbox of any of the following options will cause to use parameter value as set on the printer panel.

- **Heating system:** set the **Pre heater**, the **Print heater** and the **Dryer** temperature levels in Celsius Degrees. The range goes from 30° to 40° for **Pre heater** and **Print heater** and 30° to 55° for the **Dryer**. You can turn it off by taking the temperature below 30° to **OFF**.
- **Vacuum power:** you can choose the vacuum power. Use a predefined state: *normal*, *strong* or *off*; or select a percentage.
- **Space between jobs:** Space is expressed in centimeters.
- **Drying time (s):** Duration allowed to the drying after the print (in seconds).
- **Drying feed:** function that performs feed to the top of the dryer to promote drying after printing has finished.
- **Media feed calibration (%):** this specifies the distance-correction value in the media-feed direction.
- **Cutter friendly:** indicates if the media supports cutting or not.

### Advanced parameters

- **Overprint:** this performs overprinting or the number of passes specified by the parameter.
- **Scan interval (s):** specifies the minimum time to pause the head movement between passes (slows down the print and improves drying).
- **Cleaning while printing:** performing cleaning during printing, indicate the degree of cleaning to perform. It can remove potential clogging or condensation on the head during print.
- **Cleaning Interval (s):** time interval of **Cleaning while printing** (from 0 to 60000 seconds).

Only for the Roland-XF640-WBASE-4C:

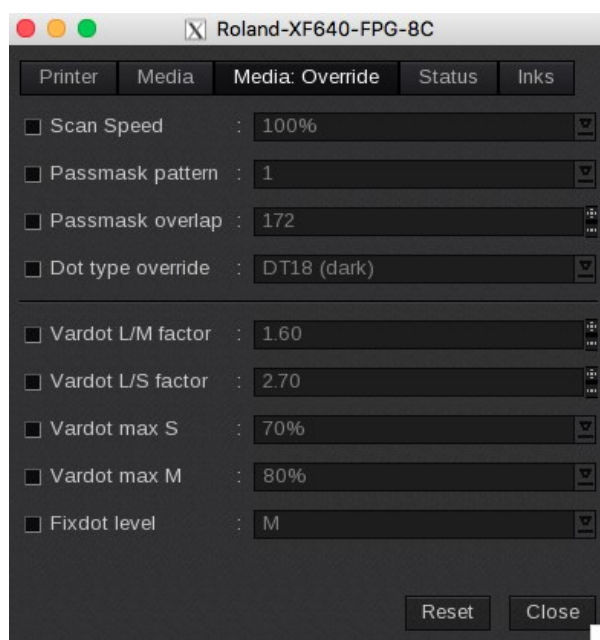
- **Head operation:** Select **Head 1 + 2** or **Head 1** or **Head 2**. It allows to select printing with both heads or selecting only the **Head 1** or the **Head 2**. It is useful if one of the heads have clogged nozzles but print operation is slower.

## Media: Override

The driver allows to override some of the print mode parameters. This is an advanced feature without any foolproof mechanisms. If you force values that are out of range, the printer will reject the job with *Data Error* message.

Changing some parameters can be useful when the default print mode setting gives unsatisfactory results, like misaligned dots or apparition of patterns between head passes.

Concerned parameters can be overwritten in Media Override tab. Each parameter override must be enabled first. When disabled, the print modes use their own predefined default value. Please note that the predefined value is never displayed anywhere in the interface. However, all currently used values are printed in the annotations, with “**More details**” option enabled.



- **Scan Speed:** scan speed can only be reduced by specifying the amount in % (in steps of 10%). The value 100% corresponds to the predefined value of selected print mode.
- **Passmask pattern:** This defines the RIPC pass mask pattern. If the default value is not satisfactory, the correct value should be determined by comparing prints using different values. The value “Off” disables the RIPC feature.

**Warning:** sometimes print modes have RIPC disabled by default (most often the fastest modes or fixed-dot modes). In that case, overriding the pattern only will not work. You will have to override also the Passmask overlap parameter.

- **Passmask overlap :** This parameter overrides RIPC pass overlap. **Enable this override only if you know what you are doing.**

Using different values from the predefined one affects profoundly the print mode, notably the real number of passes of the print mode.

- **Dot type override:** this parameter overrides the dot type. It can be useful for custom inks. Please refer to the "Custom inks" on page 9 for more details.

**We do not recommend you to change the Vardot settings. It is reserved for an advanced usage only.**

- **Vardot L/M factor:** factor between *Large* and *Medium* dots
- **Vardot L/S factor:** factor between *Large* and *Small* dots
- **Vardot max S:** maximum percentage of *Small* dots
- **Vardot max M:** maximum percentage of *Medium* dots
- **Fixdot level:** choice of the fixdot level between *Small*, *Medium* or *Large*

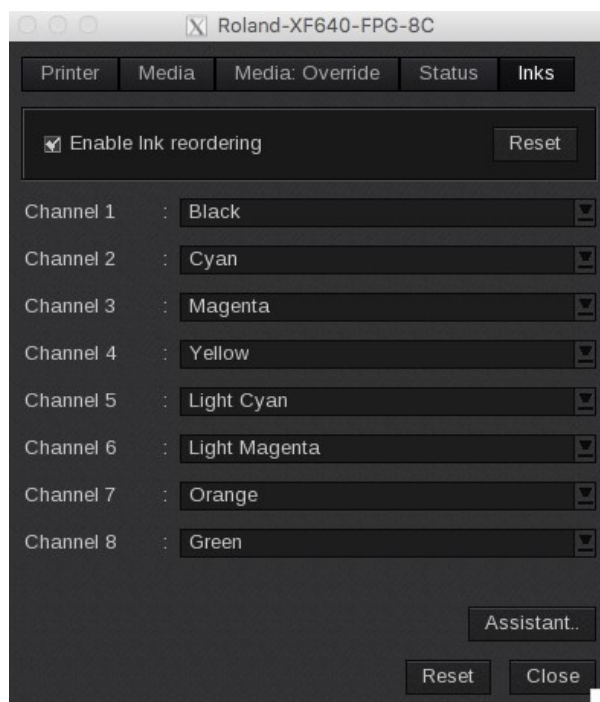
## Status



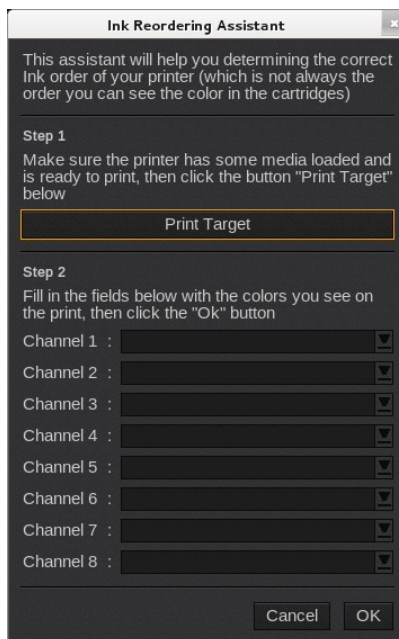
- **Status:** Global state of the printer: *Ready*, *Not available*, *Printing*. All data are coming from the printer, if it is *not available*, nothing can be displayed.
- **Inks:** *Ink* levels
- **Heaters:** temperature level of the *Pre heater*, the *Print heater* and the *Dryer*.
- **Media:** Info about the media loaded on the printer
- **Misc:** complementary info about the printer (*model*, *serial number*, *firmware version*)
- **Refresh:** button to refresh the tab.

## Inks

This tab is only available for Roland-XF640-FPG-6C & Roland-XF640-FPG-8C drivers.



- **Enable Ink reordering:** If you see that the colors of your print seem mixed, you can enable the ink reordering. For each channel, specify the right color.
- **Assistant:** use the **Assistant** to help you setting the right colors. Sometimes the ink order does not match the cartridge order.



As said on the pop-up window, first **Print the Target** then set the colors as seen on the print and click **OK**. It will automatically reorder the Inks accordingly.

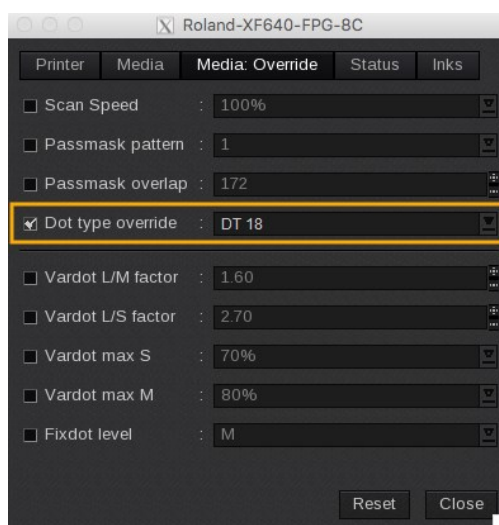


# Printer specificities

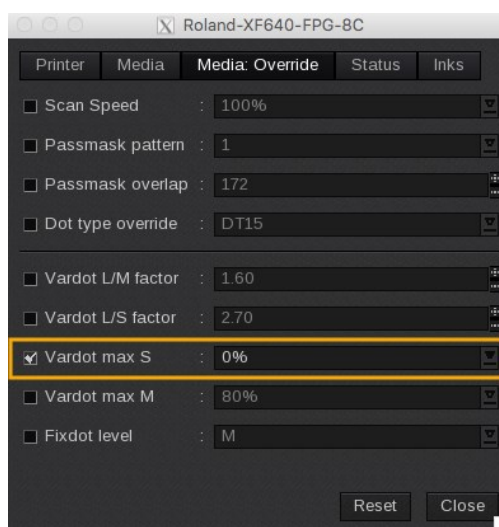
## Custom inks

The drivers are made to be used with original Roland inks (Max2 eco-solvent and water-based FPG). We noticed few incompatibilities with some third-party inks. In that case the customer has to fine-tune the driver parameters by forcing different dot type. This requires repetitive test prints using different dot type values to pick the best quality. Please note that this requires firmware 1.80 or newer. Also not all of the dot type values are compatible with all print modes. If a setting causes a data error on the printer, the dot type is not compatible with selected print mode.

We tested Next Subly water-based sublimation inks. This particular ink type causes precision problems with very small droplets in fast print modes. The best **Dot type override** for this ink is DT18, which has the biggest small droplets. DT25 is also OK. All other dot types are not suited for fast print modes with this particular ink set.



Different approach is to disable usage of small droplets and printing only with middle and large-sized droplets. This might increase the grain in light and mid-density areas but will produce much sharper edges. This can be achieved by setting **Vardot max S** to 0% in the Media: Override tab.



## Print modes

### XF640 (Eco-solvent)

| Resolution | Passes | Dot Type | Scan speed | Feed Speed | Passes/line | Passmask overlap |
|------------|--------|----------|------------|------------|-------------|------------------|
| 360        | 1      | 25       | 812        | 150        | 1           | N/A (*)          |
| 540x360    | 2      | 25       | 1083       | 90         | 2           | N/A (*)          |
|            | 4      | 25       | 1083       | 60         | 2           | 172              |
| 360x720    | 4      | 20       | 1016       | 60         | 1           | 172              |
| 720-fixed  | 8      | 22       | 1016       | 60         | 4           | N/A (*)          |
| 720        | 5      | 20       | 1016       | 60         | 2           | 69               |
|            | 6      | 20       | 1016       | 60         | 2           | 115              |
|            | 8      | 20       | 1016       | 30         | 2           | 172              |
| 720x1440   | 9      | 22       | 1016       | 30         | 2           | 38               |
|            | 12     | 22       | 1016       | 30         | 2           | 115              |
|            | 16     | 22       | 1016       | 30         | 2           | 172              |
| 1080-fixed | 9      | 22       | 1016       | 60         | 3           | N/A (*)          |
| 1440-fixed | 16 (A) | 22       | 508        | 30         | 2           | 172              |
|            | 16 (B) | 22       | 508        | 30         | 4           | N/A (*)          |

N/A (\*): Mode does not use RIPC (Roland Intelligent Pass Control).

### XF640-FPG-4C

| Resolution | Passes | Dot Type | Scan speed | Feed Speed | Passes/line | Passmask overlap |
|------------|--------|----------|------------|------------|-------------|------------------|
| 360-fixed  | 1 DT14 | 14       | 1016       | 150        | 1           | N/A (*)          |
|            | 1 DT16 | 16       | 812        | 150        | 1           | N/A (*)          |
| 540x360    | 2      | 16       | 1083       | 90         | 2           | N/A (*)          |
|            | 3      | 16       | 1083       | 60         | 2           | 115              |
| 360x720    | 4      | 14       | 1016       | 60         | 1           | 172              |
| 720-fixed  | 8      | 16       | 1016       | 30         | 4           | N/A (*)          |
| 720        | 5      | 14       | 1016       | 60         | 2           | 69               |
|            | 9      | 14       | 1016       | 30         | 4           | 38               |
| 720x1440   | 9      | 14       | 1016       | 30         | 2           | 38               |
|            | 12     | 14       | 1016       | 30         | 2           | 115              |
| 1080-fixed | 9      | 14       | 1016       | 30         | 3           | N/A (*)          |
| 1440-fixed | 16     | 16       | 508        | 30         | 4           | N/A (*)          |

N/A (\*): Mode does not use RIPC (Roland Intelligent Pass Control).

## XF640-FPG-6C

| Resolution | Passes | Dot Type | Scan speed | Feed Speed | Passes/line | Passmask overlap |
|------------|--------|----------|------------|------------|-------------|------------------|
| 360-fixed  | 2 DT14 | 14       | 1016       | 150        | 1           | N/A (*)          |
|            | 2 DT16 | 16       | 812        | 150        | 1           | N/A (*)          |
| 540x360    | 4      | 16       | 1083       | 90         | 2           | N/A (*)          |
|            | 6      | 16       | 1083       | 60         | 2           | 115              |
| 360x720    | 8      | 14       | 1016       | 60         | 1           | 172              |
| 720-fixed  | 16     | 16       | 1016       | 30         | 4           | N/A (*)          |
| 720        | 10     | 14       | 1016       | 60         | 2           | 69               |
|            | 18     | 14       | 1016       | 30         | 4           | 38               |
| 720x1440   | 18     | 14       | 1016       | 30         | 2           | 38               |
|            | 24     | 14       | 1016       | 30         | 2           | 115              |
| 1080-fixed | 18     | 14       | 1016       | 30         | 3           | N/A (*)          |
| 1440-fixed | 32     | 16       | 508        | 30         | 4           | N/A (*)          |

N/A (\*): Mode does not use RIPC (Roland Intelligent Pass Control).

## XF640-FPG-8C

| Resolution | Passes | Dot Type | Scan speed | Feed Speed | Passes/line | Passmask overlap |
|------------|--------|----------|------------|------------|-------------|------------------|
| 360-fixed  | 2 DT14 | 14       | 1016       | 150        | 1           | N/A (*)          |
|            | 2 DT16 | 16       | 812        | 150        | 1           | N/A (*)          |
| 540x360    | 4      | 16       | 1083       | 90         | 2           | N/A (*)          |
|            | 6      | 16       | 1083       | 60         | 2           | 115              |
| 360x720    | 8      | 14       | 1016       | 60         | 1           | 172              |
| 720-fixed  | 16     | 16       | 1016       | 30         | 4           | N/A (*)          |
| 720        | 10     | 14       | 1016       | 60         | 2           | 69               |
|            | 18     | 14       | 1016       | 30         | 4           | 38               |
| 1080-fixed | 18     | 14       | 1016       | 30         | 3           | N/A (*)          |

N/A (\*): Mode does not use RIPC (Roland Intelligent Pass Control).

# PRINTER SPECIFICITIES

## XF640-WBASE-4C

| Resolution      | Passes     | Dot Type | Scan speed | Feed Speed | Passes/line | Passmask overlap (Head 1+2) | Passmask overlap (Head 1 or 2) |
|-----------------|------------|----------|------------|------------|-------------|-----------------------------|--------------------------------|
| 360-fixed       | 1          | 14       | 1016       | 150        | 1           | N/A (*)                     | N/A (*)                        |
|                 | 1 (slower) | 18       | 812        | 150        | 1           | N/A (*)                     | N/A (*)                        |
| 360             | 1          | 18       | 812        | 150        | 1           | N/A (*)                     | N/A (*)                        |
|                 | 2          | 18       | 1083       | 90         | 2           | N/A (*)                     | N/A (*)                        |
|                 | 3          | 18       | 1083       | 90         | 2           | 115                         | 60                             |
| 540x360         | 2          | 18       | 1083       | 90         | 2           | N/A (*)                     | N/A (*)                        |
|                 | 3          | 18       | 1083       | 60         | 2           | 115                         | 60                             |
|                 | 4          | 18       | 1083       | 60         | 2           | 172                         | 90                             |
| 720x360         | 2          | 14       | 508        | 150        | 1           | 172                         | 90                             |
| 360x720         | 2          | 14       | 1016       | 90         | 1           | N/A (*)                     | N/A (*)                        |
|                 | 2 (slower) | 18       | 812        | 90         | 1           | N/A (*)                     | N/A (*)                        |
|                 | 3          | 14       | 1016       | 90         | 1           | 115                         | 60                             |
|                 | 3 (slower) | 18       | 812        | 90         | 1           | 115                         | 60                             |
|                 | 4          | 14       | 1016       | 60         | 1           | 172                         | 90                             |
|                 | 4 (slower) | 18       | 812        | 60         | 1           | 172                         | 90                             |
| 540x720         | 4 (slower) | 14       | 677        | 90         | 1           | 172                         | 90                             |
| 720-fixed       | 8          | 18       | 1016       | 30         | 4           | N/A (*)                     | N/A (*)                        |
| 720             | 2          | 14       | 508        | 90         | 1           | N/A (*)                     | N/A (*)                        |
|                 | 3          | 14       | 508        | 90         | 1           | 115                         | 60                             |
|                 | 4          | 14       | 508        | 90         | 1           | 172                         | 90                             |
|                 | 5          | 14       | 1016       | 60         | 2           | 69                          | 36                             |
|                 | 6          | 14       | 1016       | 60         | 2           | 115                         | 60                             |
|                 | 6 (slower) | 18       | 812        | 60         | 2           | 115                         | 60                             |
|                 | 8          | 14       | 1016       | 30         | 2           | 172                         | 90                             |
|                 | 9          | 14       | 1016       | 30         | 4           | 38                          | 20                             |
| 1440x720-fixed  | 9          | 14       | 1016       | 60         | 4           | 38                          | 20                             |
| 720x1080-fixed  | 6          | 14       | 1016       | 60         | 2           | N/A (*)                     | N/A (*)                        |
|                 | 6 (slower) | 14       | 508        | 60         | 1           | 172                         | 90                             |
| 1080-fixed      | 9          | 14       | 1016       | 30         | 3           | N/A (*)                     | N/A (*)                        |
| 1080            | 9          | 14       | 677        | 60         | 2           | 115                         | 60                             |
| 720x1440        | 9          | 14       | 1016       | 30         | 2           | 38                          | 20                             |
|                 | 12         | 14       | 1016       | 30         | 2           | 115                         | 60                             |
|                 | 16         | 14       | 1016       | 30         | 2           | 172                         | 90                             |
| 1080x1440-fixed | 12         | 14       | 677        | 30         | 2           | 115                         | 60                             |
| 1440-fixed      | 16 (A)     | 14       | 508        | 30         | 2           | 172                         | 90                             |
|                 | 16 (B)     | 14       | 508        | 30         | 2           | 172                         | 90                             |

N/A (\*): Mode does not use RIPC (Roland Intelligent Pass Control).

Share your Caldera experience and discover our online help on:  
[calderadesk.caldera.com](https://calderadesk.caldera.com)

CALDERA - 1 rue des Frères Lumière - P.A. d'Eckbolsheim  
BP 78002 - 67038 Strasbourg Cedex 2 - France

www.caldera.com - Tel. +33 388 210 000 - Fax +33 388 756 242 - [contact@caldera.com](mailto:contact@caldera.com)